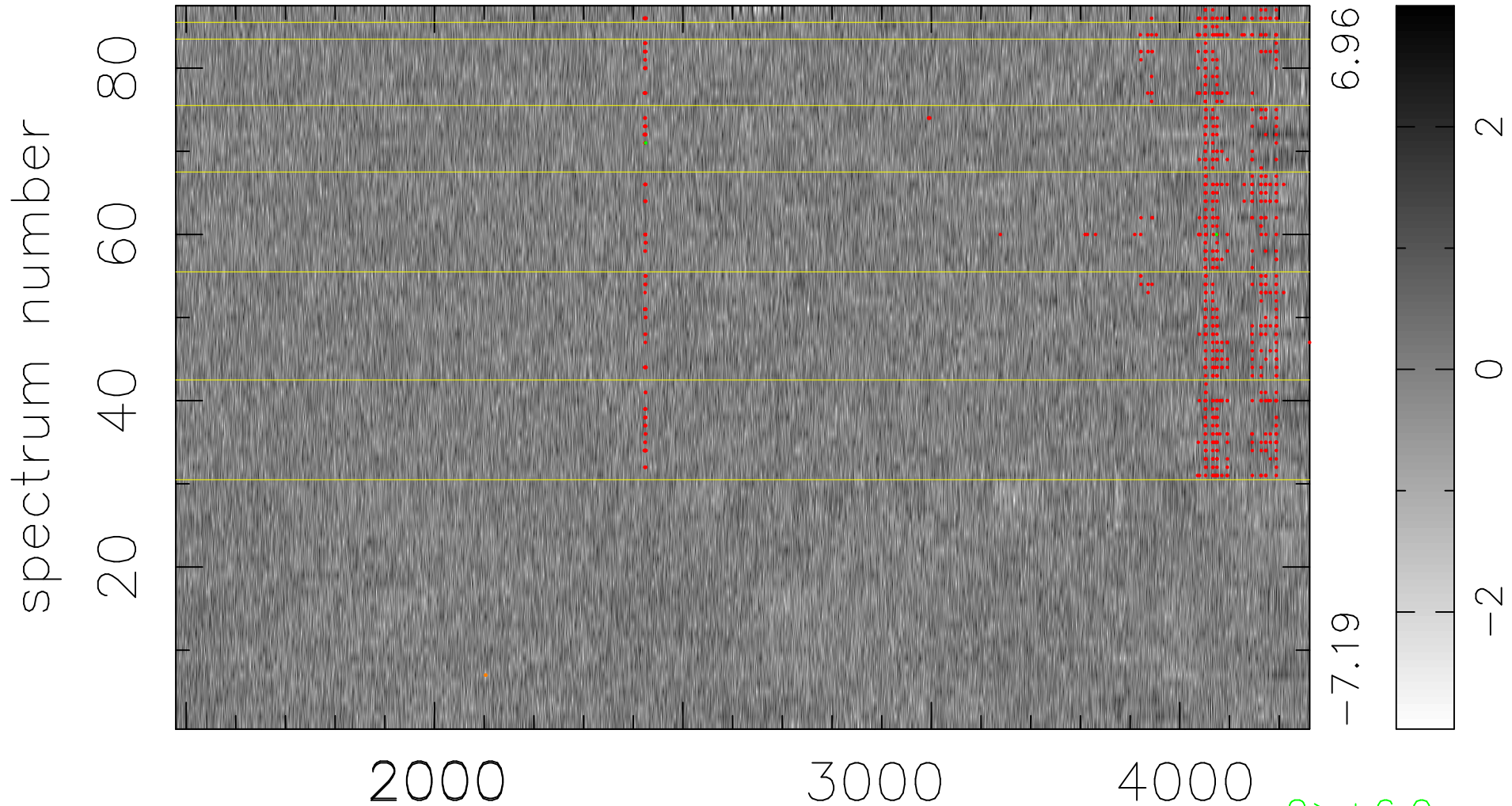


$$\chi(\lambda,t) = (\text{Data} - \text{Model } AC_5) / \sigma \chi$$

$$\chi^2 / (397155 - 4849) = 1.064 \Rightarrow 1.007$$

4565x87



2 > +6.0σ

2 < -6.0σ

bad:719=0.18%

λ (Å) z = 1.29956