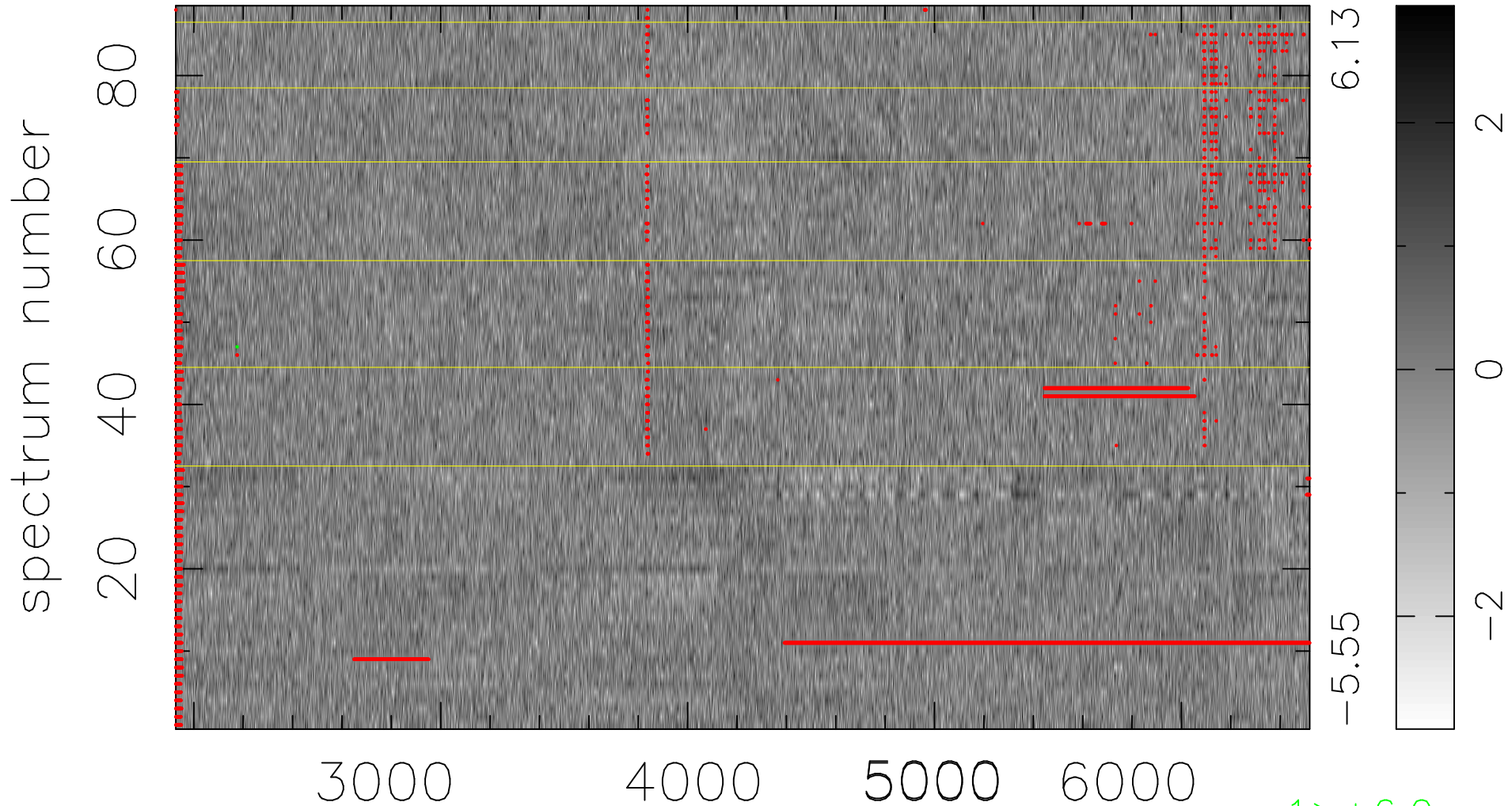


$$\chi(\lambda, t) = (\text{Data} - \text{Model } \text{AC}_5\text{B}_4\text{F}) / \sigma \chi$$

$$\chi^2 / (404184 - 5194) = 1.004 \Rightarrow 0.997$$

4593x88



bad:6071=1.5%

λ (Å) $z = 0.45474$