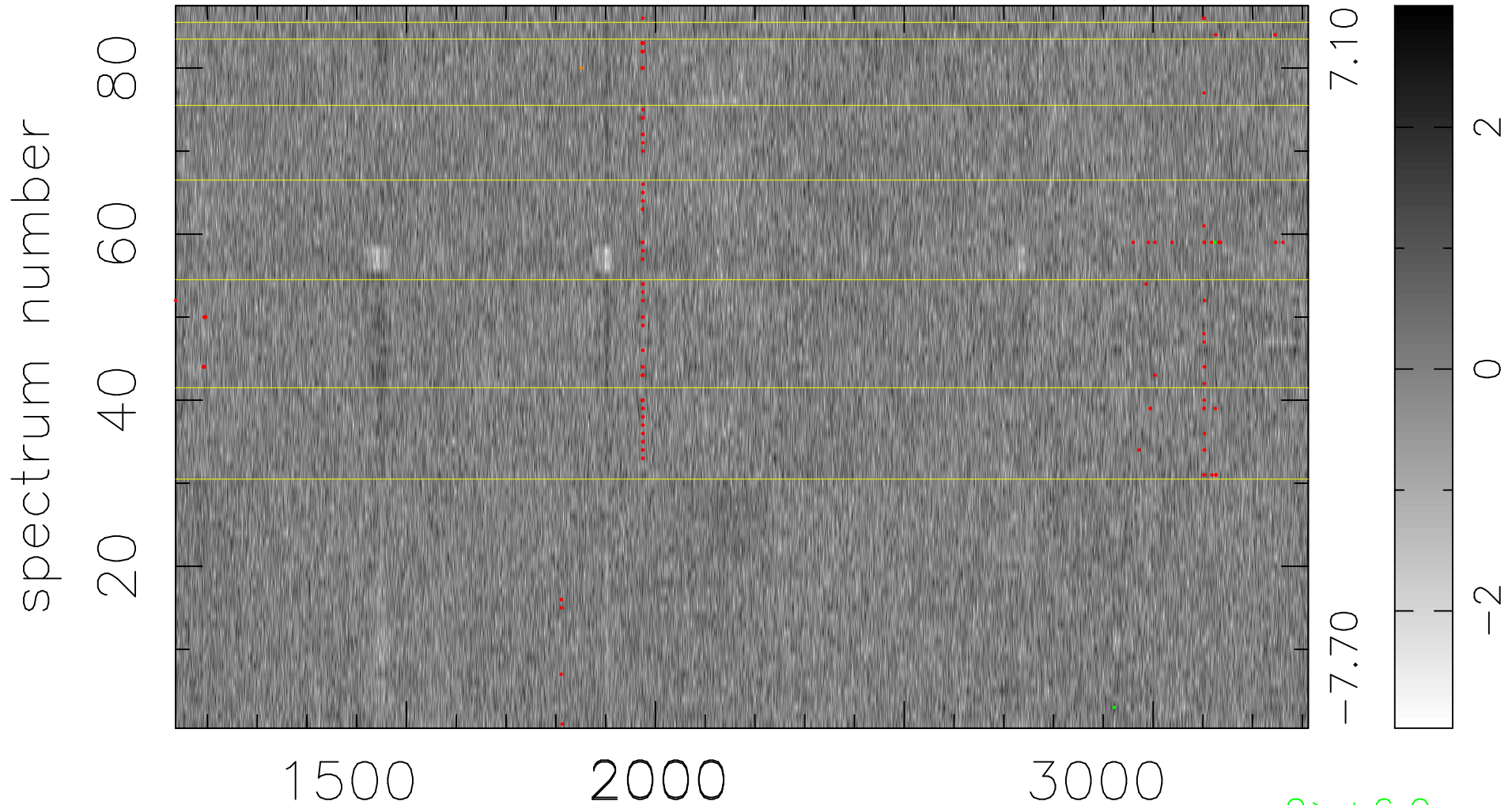


$$\chi(\lambda, t) = (\text{Data} - \text{Model AC}_5\text{F}) / \sigma \chi$$

$$\chi^2 / (396024 - 5105) = 0.893 \Rightarrow 1.009$$

4552x87



bad:131=0.033% λ (Å) $z = 1.82858$

2 > +6.0 σ

1 < -6.0 σ