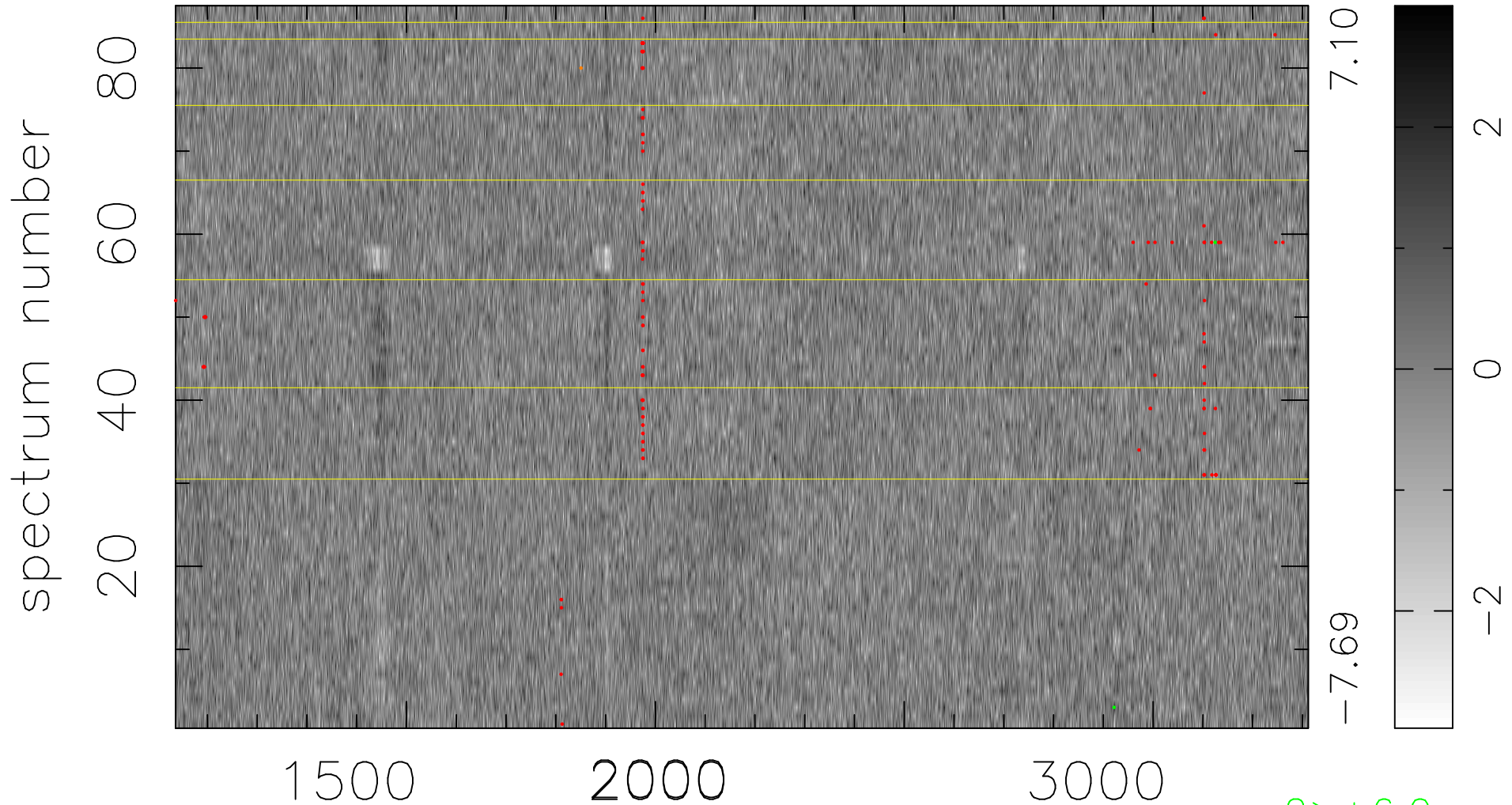


$$\chi(\lambda,t) = (\text{Data} - \text{Model } AC_5) / \sigma \chi$$

$$\chi^2 / (396024 - 5018) = 0.893 \Rightarrow 1.008$$

4552x87



bad:131=0.033% λ (Å) $z = 1.82858$

2 > +6.0 σ
1 < -6.0 σ