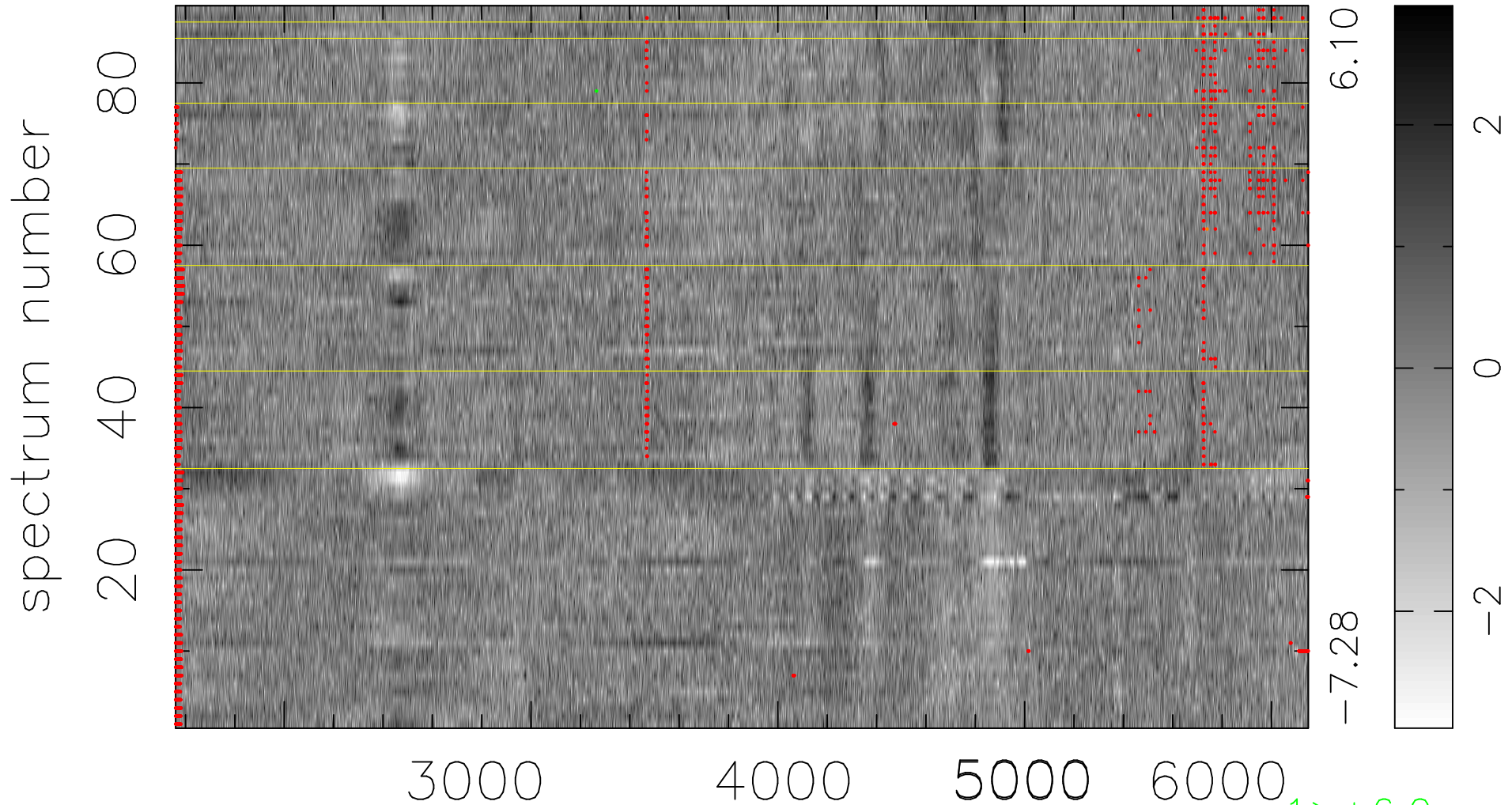


$$\chi(\lambda, t) = (\text{Data} - \text{Model AC}_5\text{F}) / \sigma \chi$$

$$\chi^2 / (408510 - 4964) = 1.052 \Rightarrow 1.005$$

4590x89



bad:2264=0.55% λ (Å) $z = 0.58349$

$1 > +6.0\sigma$
 $1 < -6.0\sigma$