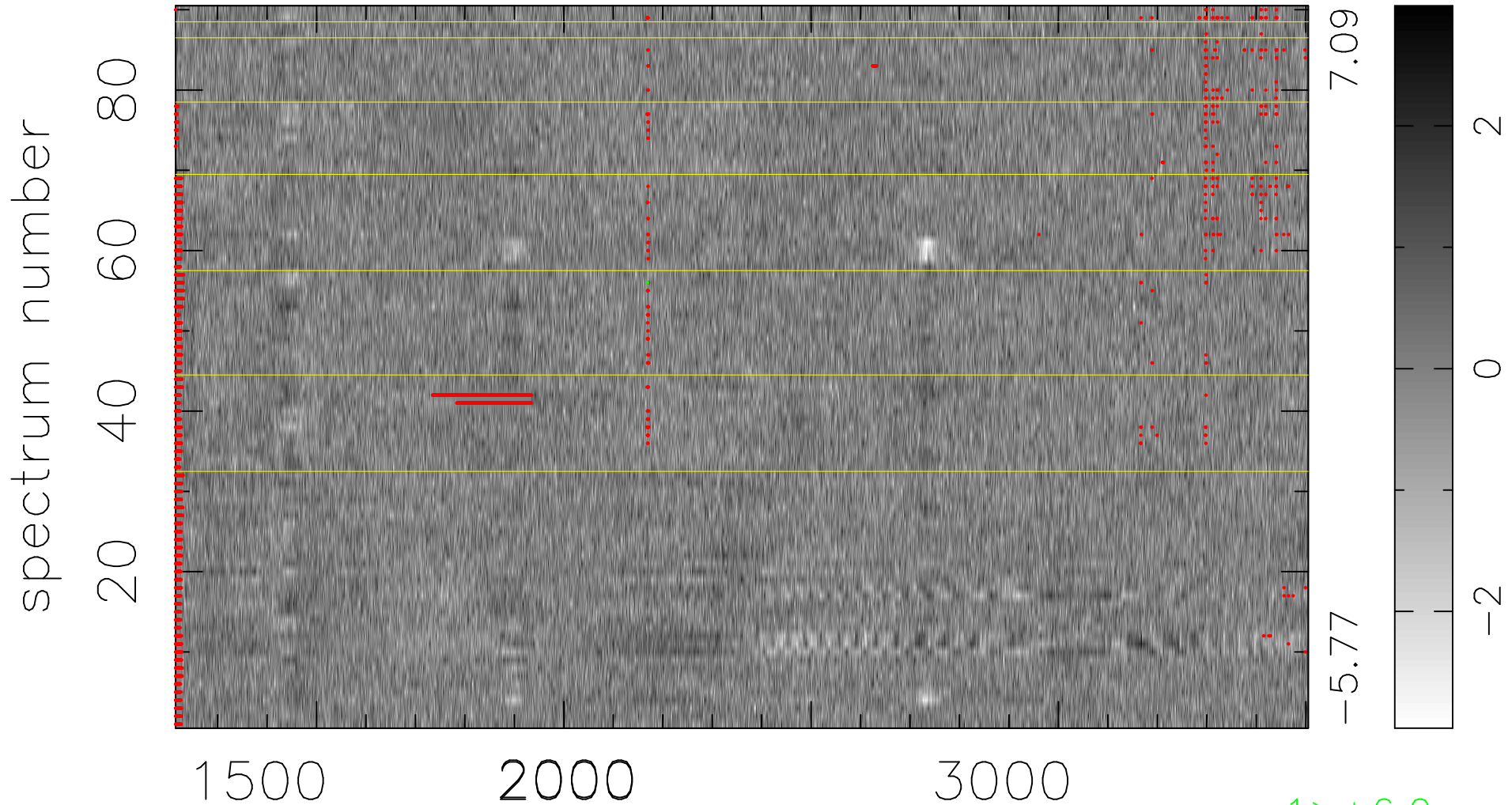


$$\chi(\lambda, t) = ( \text{Data} - \text{Model AC}_5\text{F} ) / \sigma \chi$$

$$\chi^2 / (412290 - 5153) = 0.954 \Rightarrow 1.007$$

4581 × 90



bad:2735=0.66%  $\lambda$  (Å)  $z = 1.58510$