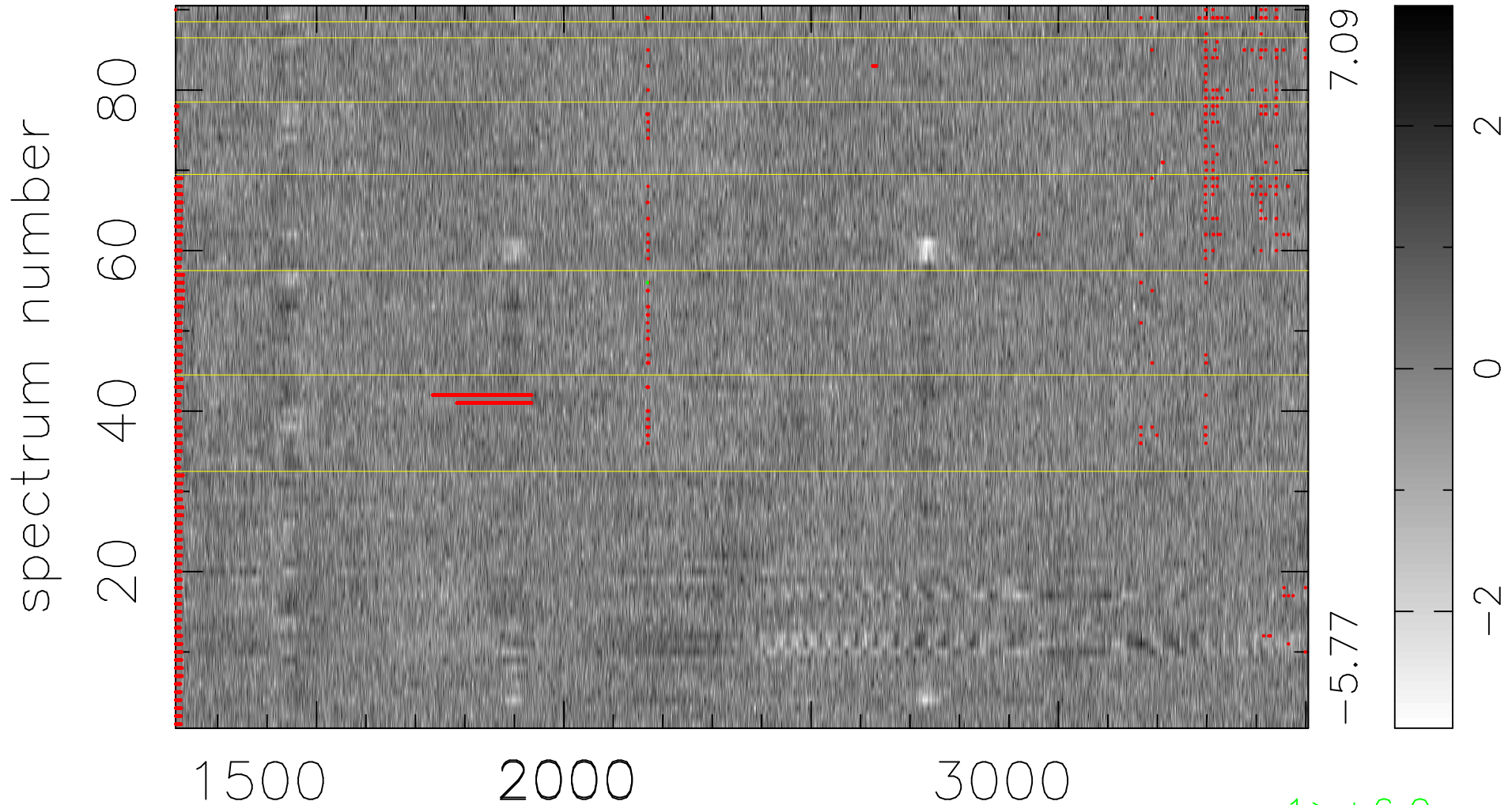


$$\chi(\lambda, t) = (\text{Data} - \text{Model } AC_5) / \sigma \chi$$

$$\chi^2 / (412290 - 5063) = 0.955 \Rightarrow 1.007$$

4581 × 90



7.09

-5.77

2

0

-2

1 > +6.0σ

bad:2735=0.66% λ (Å) z = 1.58510