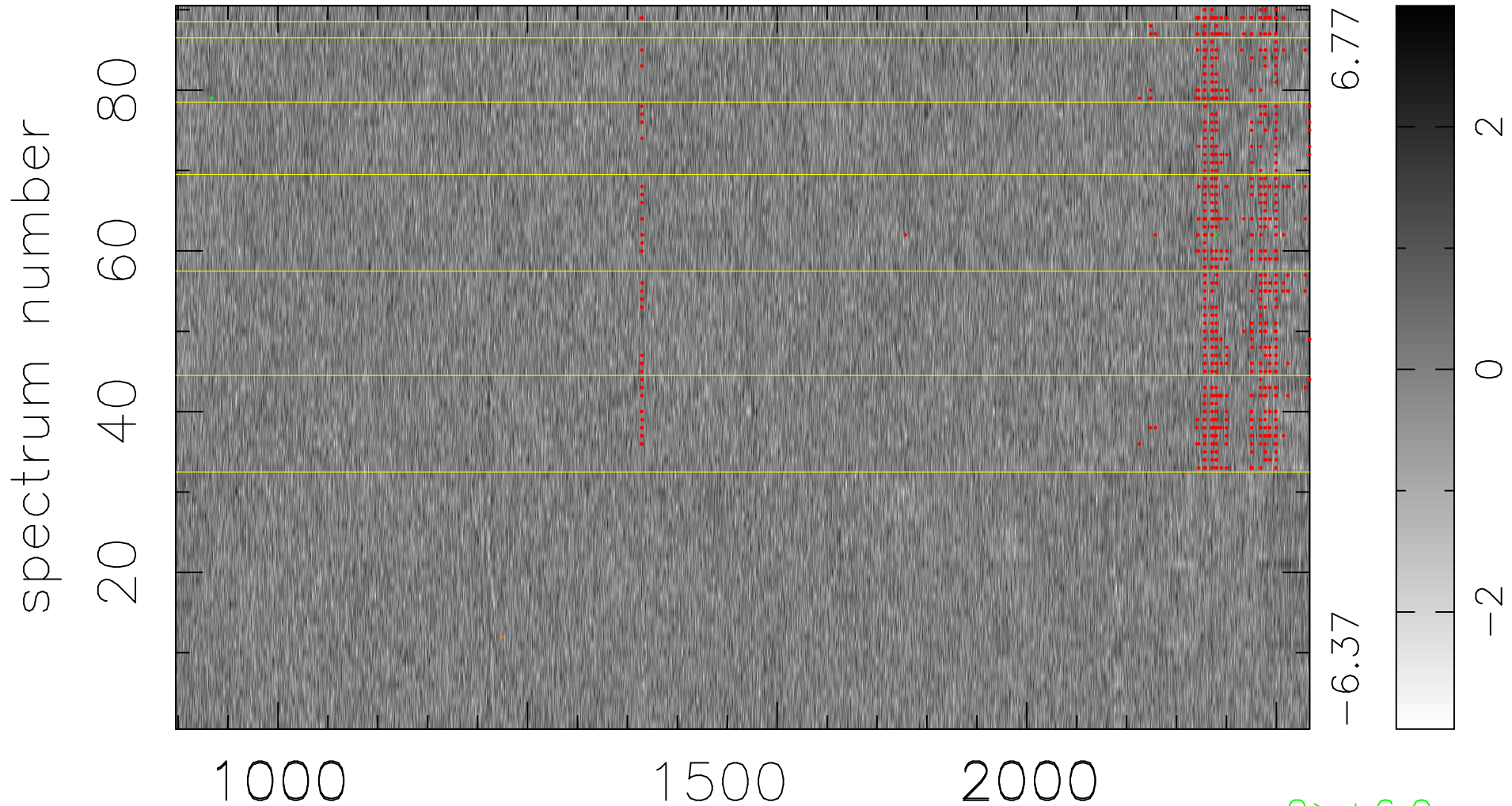


$$\chi(\lambda, t) = (\text{Data} - \text{Model } \text{AC}_5\text{B}_6\text{F}) / \sigma \chi$$

$$\chi^2 / (408870 - 5335) = 0.973 \Rightarrow 1.007$$

4543x90



bad:716=0.18%

λ (Å) $z = 2.98764$

2 > +6.0 σ

1 < -6.0 σ