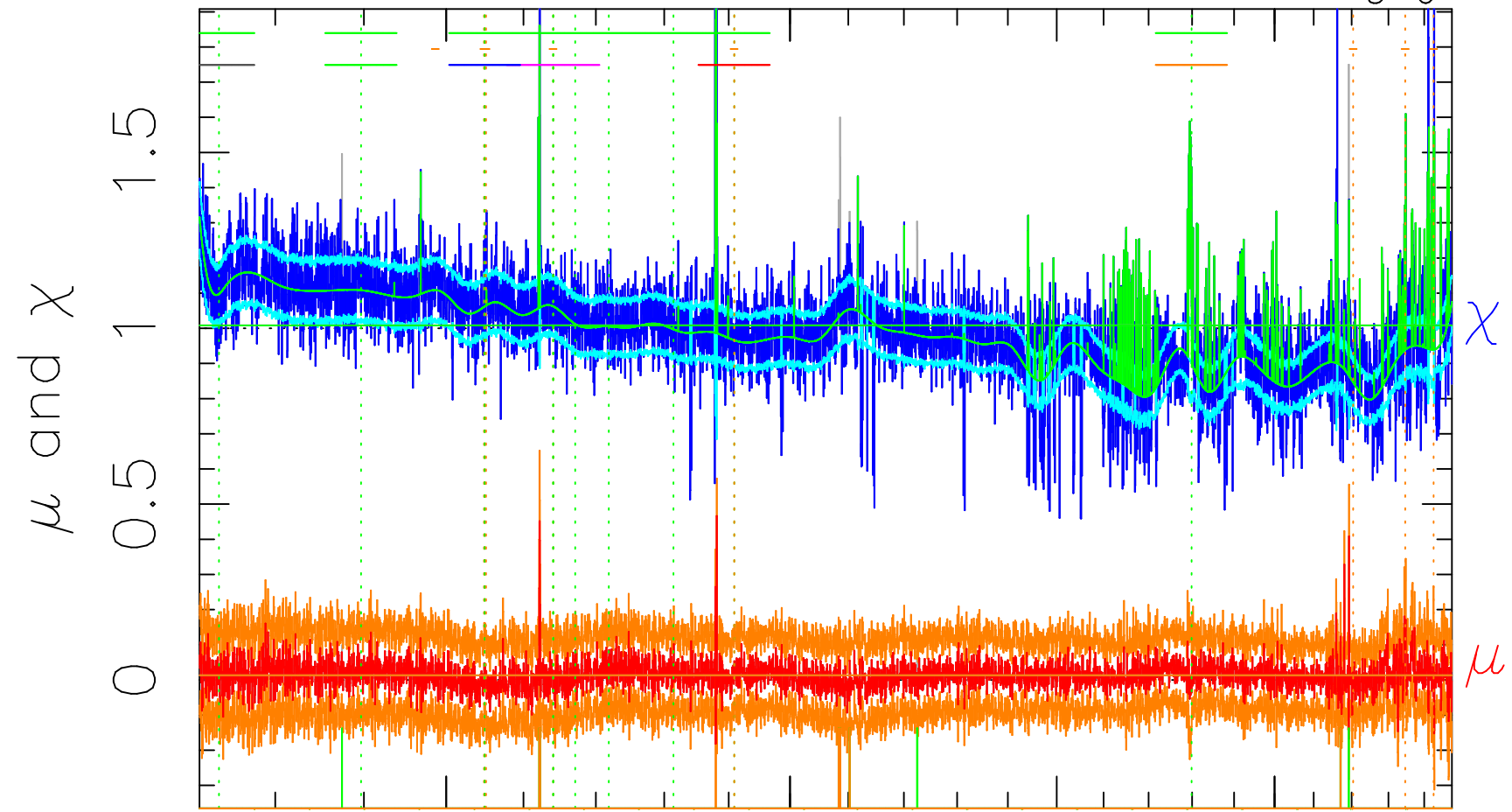


$$\mu = 0.013(23) \quad \chi = 1.009(86) \Rightarrow 1.008(86)$$

rm740

med(mad)

AC<sub>5</sub>B<sub>6</sub>F



1500

2000

3000

$\lambda$  (Å)  $z = 1.96767$

$4 > +6.0\sigma$   
 $9 < -6.0\sigma$