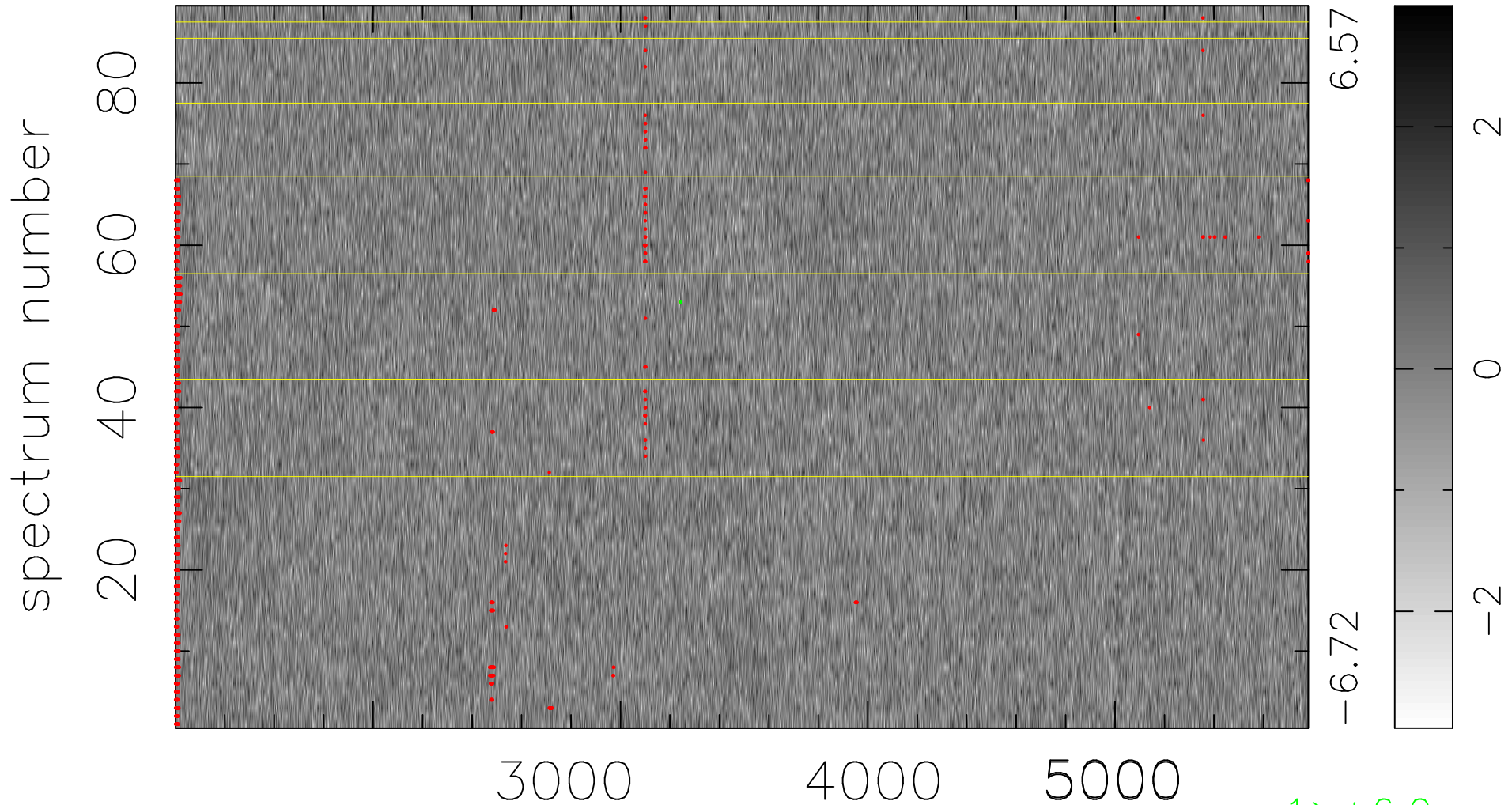


$$\chi(\lambda, t) = ( \text{Data} - \text{Model } \text{AC}_5\text{B}_3\text{F} ) / \sigma \chi$$

$$\chi^2 / (407709 - 5107) = 0.927 \Rightarrow 1.007$$

4581 × 89



bad:1086=0.27%  $\lambda$  (Å)  $z = 0.72377$

1 > +6.0σ

1 < -6.0σ