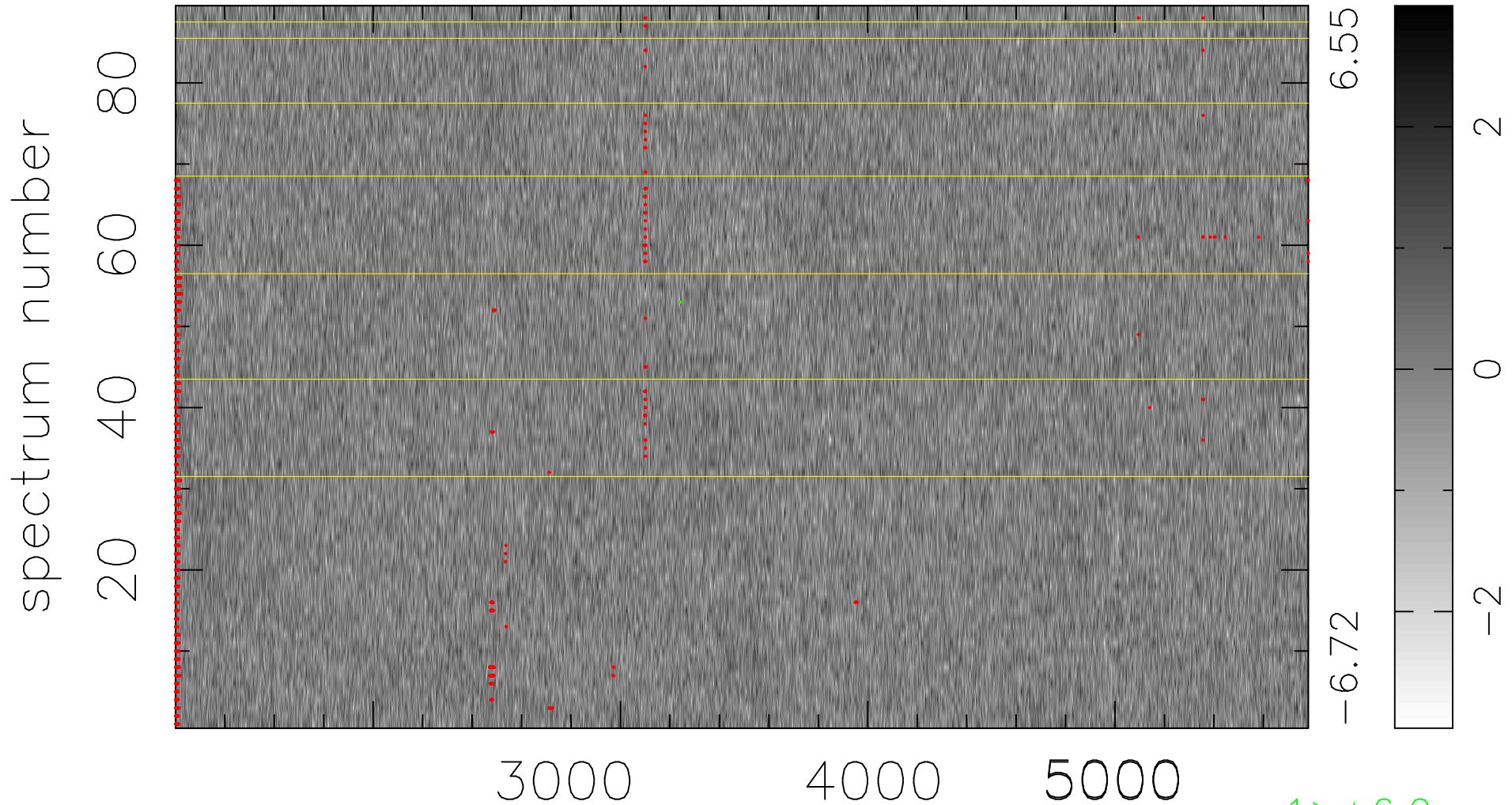


$$\chi(\lambda,t) = ( \text{Data} - \text{Model } AC_5 ) / \sigma \chi$$

$$\chi^2 / (407709 - 4864) = 0.929 \Rightarrow 1.007$$

4581 × 89



bad:1086=0.27%

$\lambda$  (Å)  $z = 0.72377$

1 > +6.0σ

1 < -6.0σ