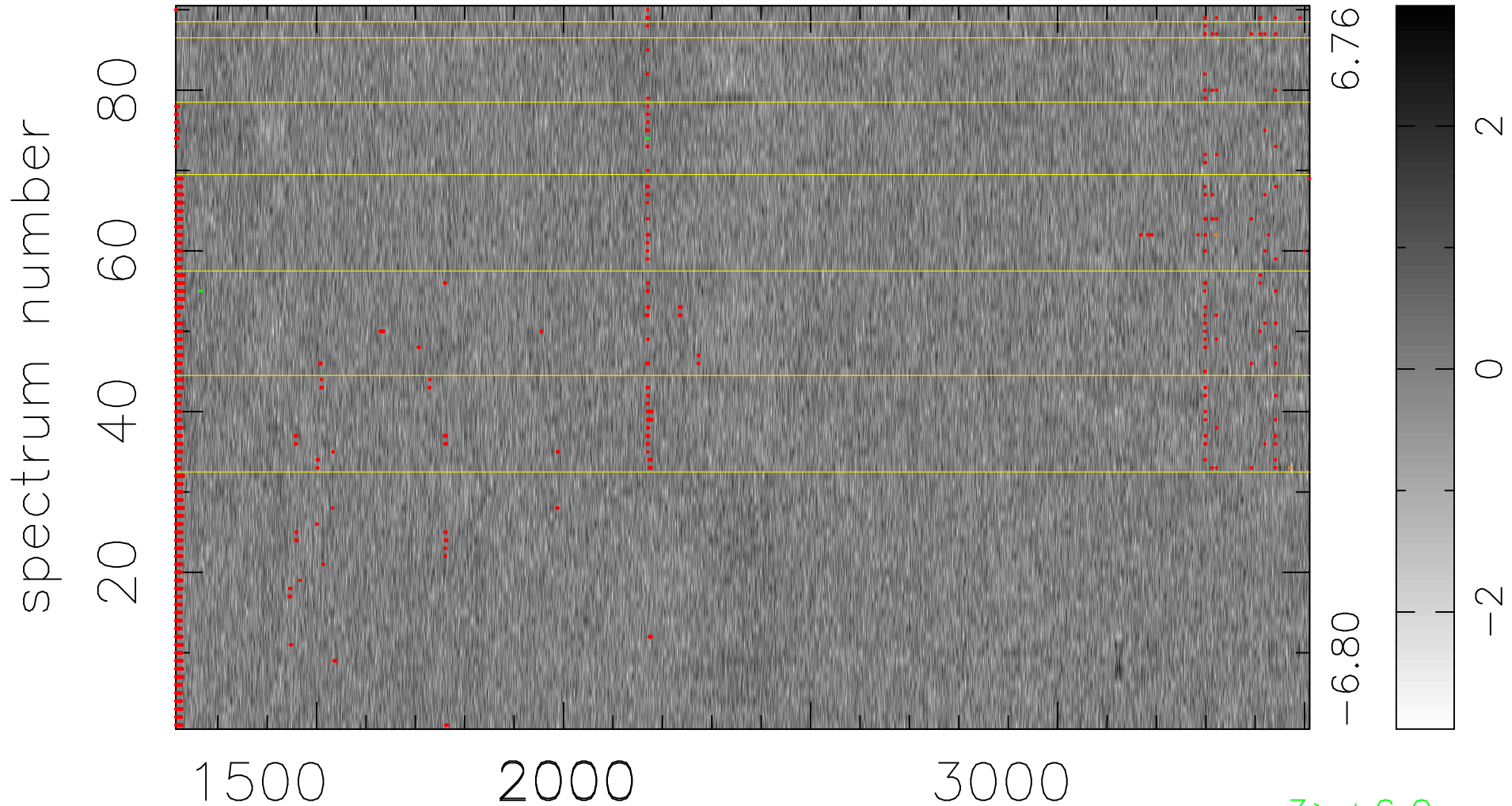


$$\chi(\lambda, t) = ( \text{Data} - \text{Model } \text{AC}_5\text{B}_5\text{F} ) / \sigma \chi$$

$$\chi^2 / (413190 - 5338) = 1.035 \Rightarrow 1.008$$

4591 × 90



bad:2207=0.53%  $\lambda$  (Å)  $z = 1.58454$

3 > +6.0 $\sigma$

2 < -6.0 $\sigma$