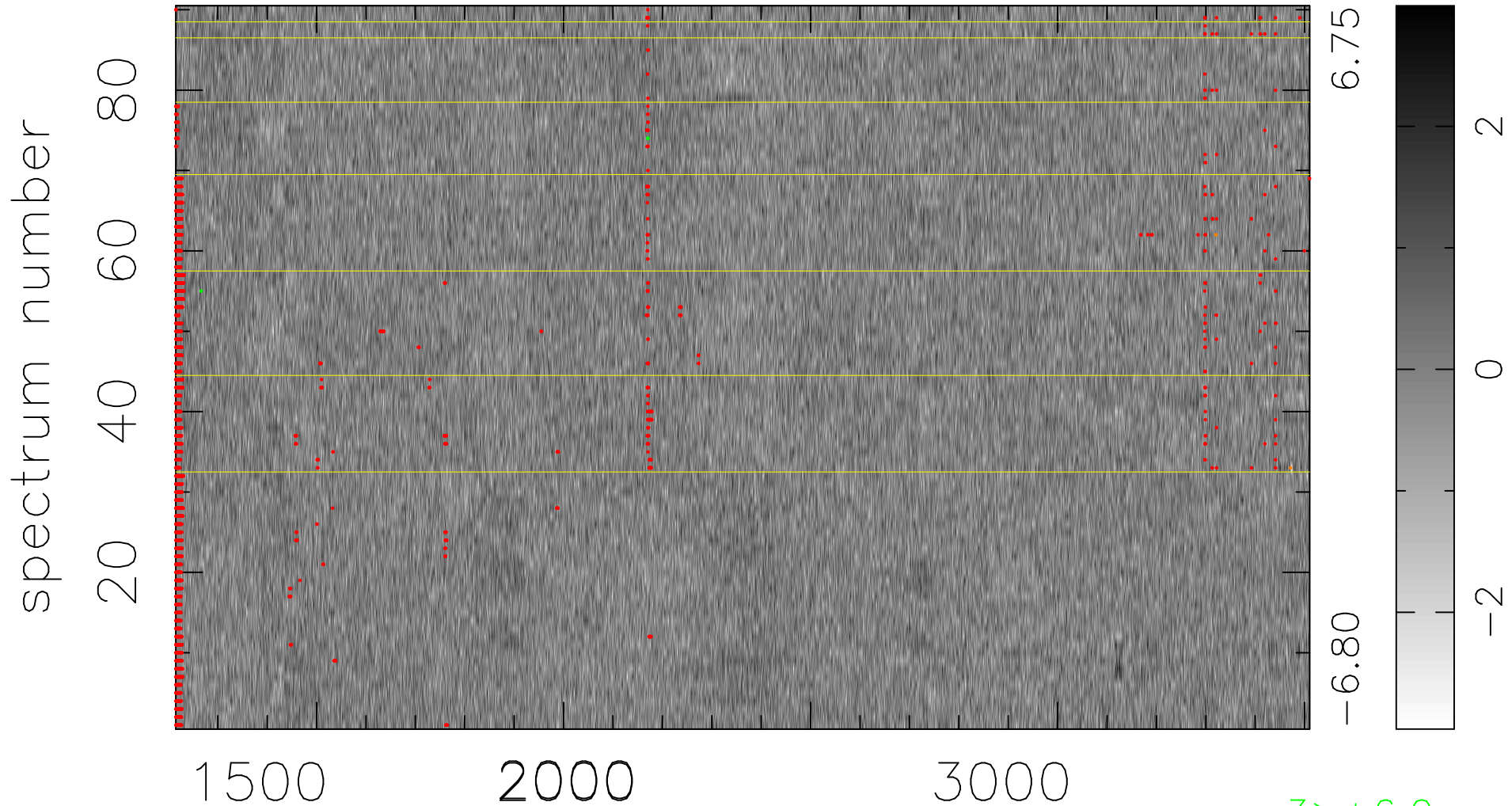


$$\chi(\lambda, t) = (\text{Data} - \text{Model AC}_5\text{F}) / \sigma \chi$$

$$\chi^2 / (413190 - 5160) = 1.039 \Rightarrow 1.007$$

4591 × 90



bad:2207=0.53% λ (Å) $z = 1.58454$

3 > +6.0 σ

2 < -6.0 σ