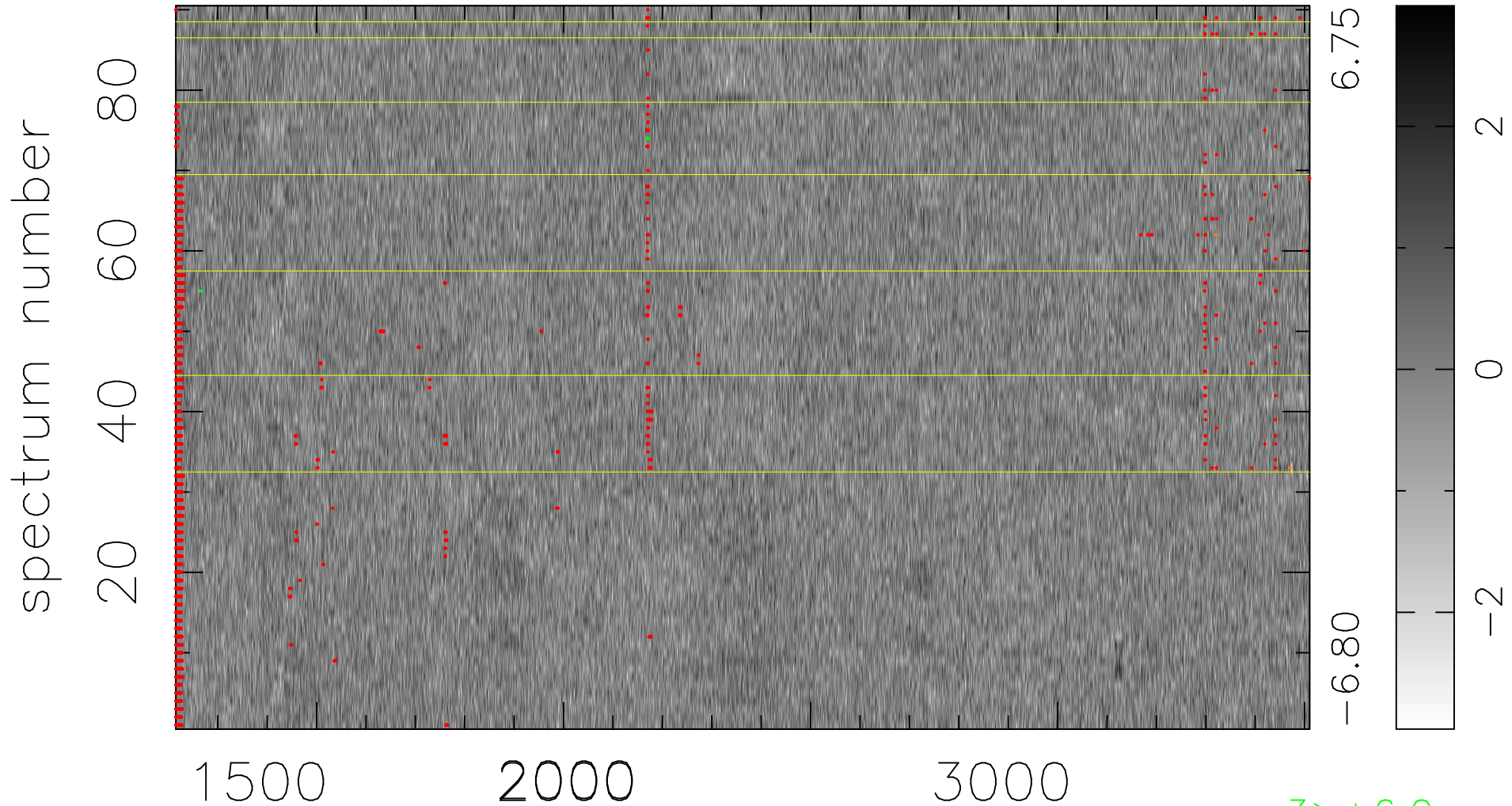


$$\chi(\lambda,t) = (\text{Data} - \text{Model } AC_5) / \sigma \chi$$

$$\chi^2 / (413190 - 5070) = 1.039 \Rightarrow 1.007$$

4591 × 90



bad:2207=0.53% λ (Å) $z = 1.58454$

3 > +6.0σ

2 < -6.0σ