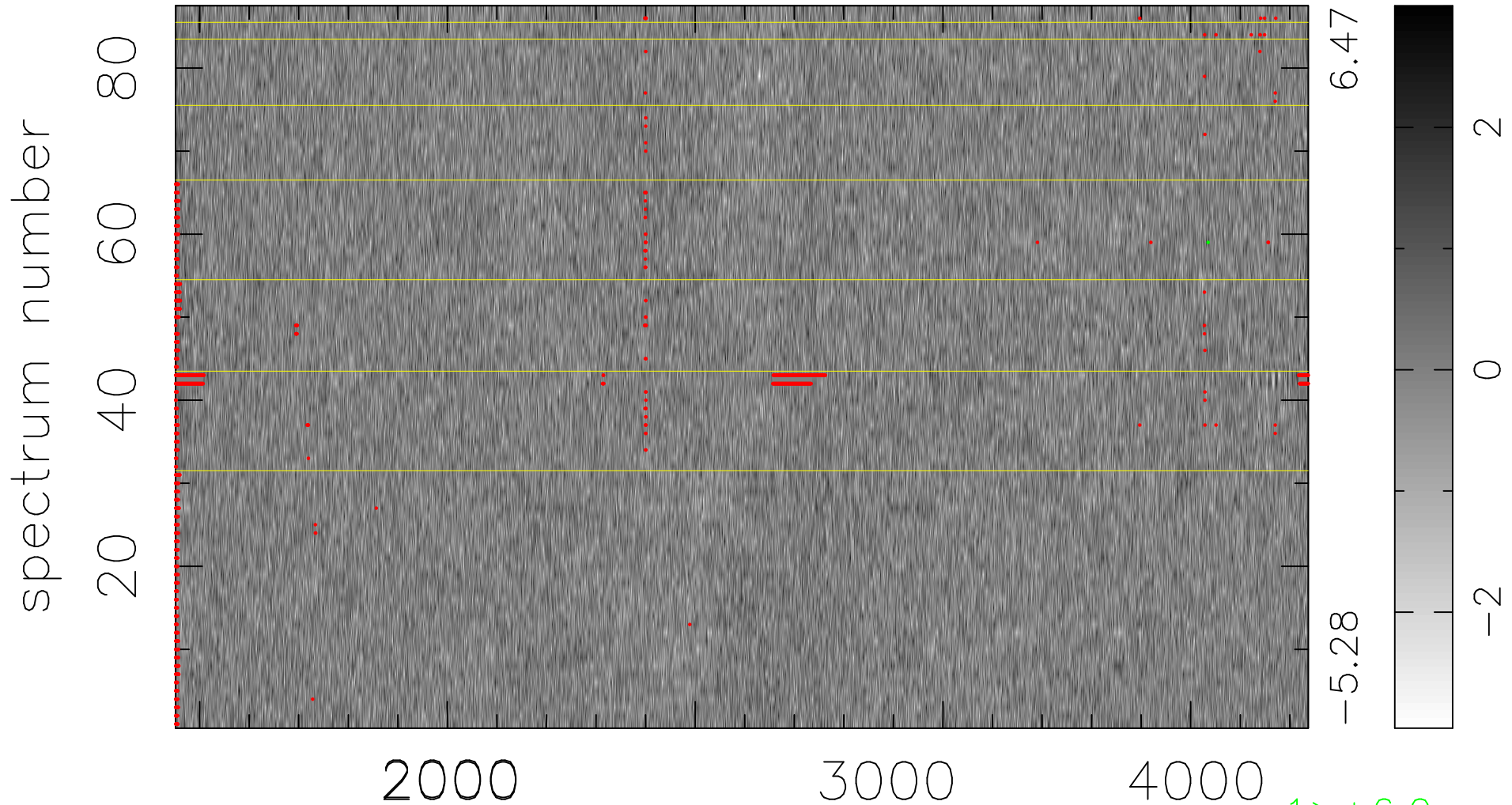


$$\chi(\lambda, t) = (\text{Data} - \text{Model } \text{AC}_5\text{B}_3\text{F}) / \sigma \chi$$

$$\chi^2 / (397764 - 5107) = 0.942 \Rightarrow 1.008$$

4572x87



bad:1484=0.37% λ (Å) $z = 1.32528$