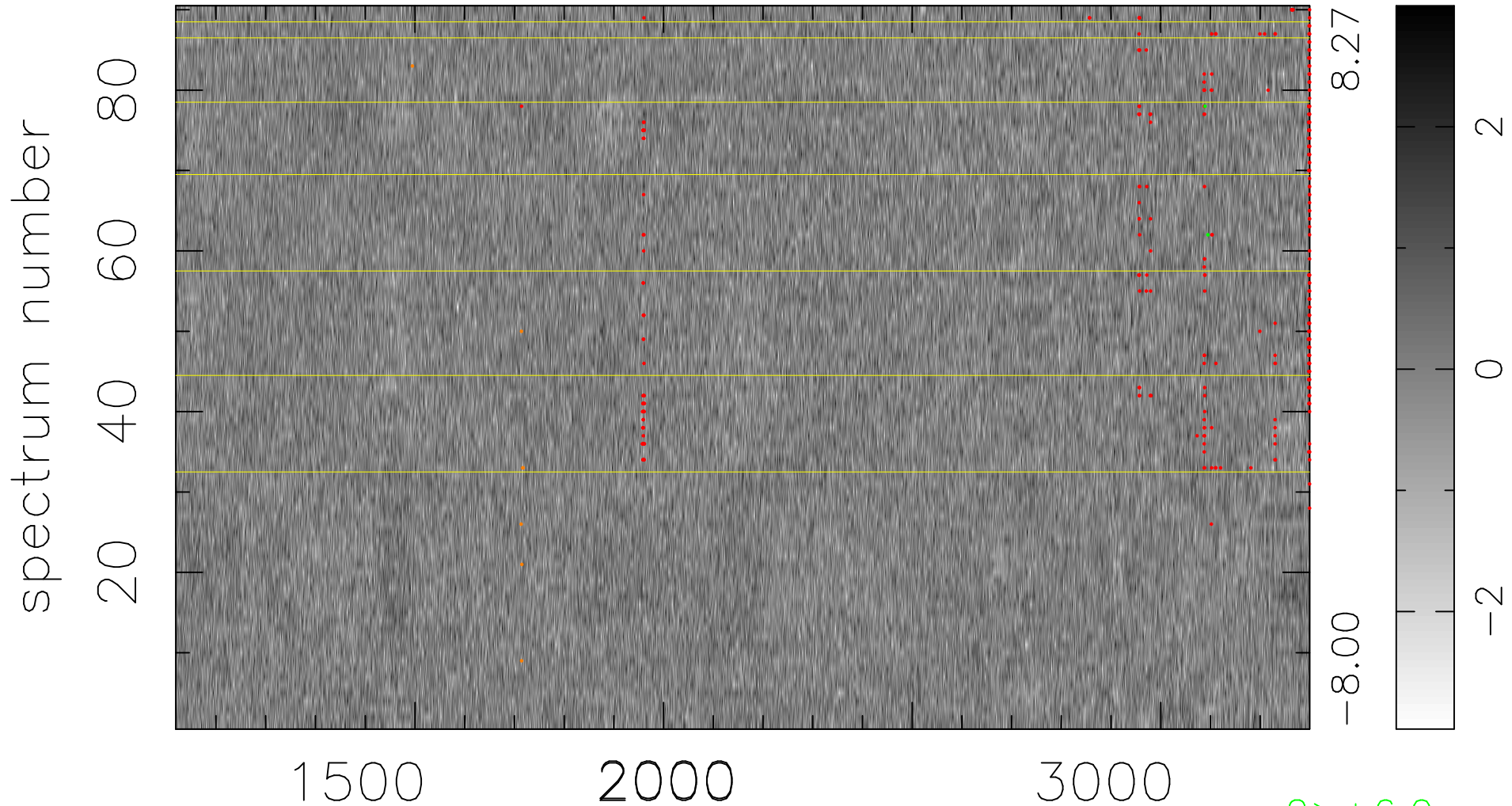


$$\chi(\lambda,t) = ( \text{Data} - \text{Model } AC_5 ) / \sigma \chi$$

$$\chi^2 / (410580 - 5036) = 0.935 \Rightarrow 1.007$$

4562x90



2 > +6.0σ

7 < -6.0σ

bad:333=0.081%    λ (Å)    z = 1.84766