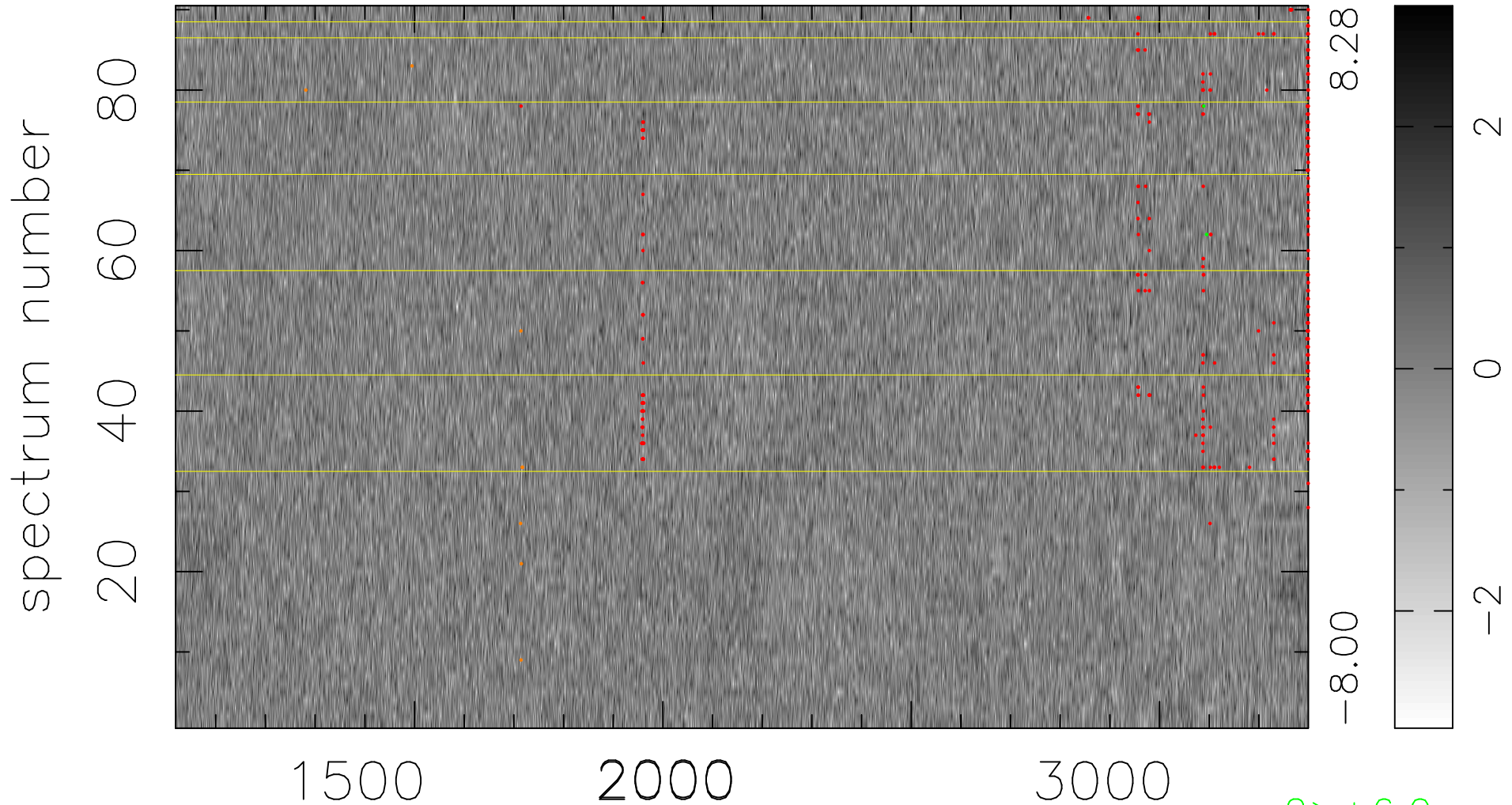


$$\chi(\lambda, t) = ( \text{Data} - \text{Model } \text{AC}_5\text{B}_5\text{F} ) / \sigma \chi$$

$$\chi^2 / (410580 - 5265) = 0.931 \Rightarrow 1.007$$

4562x90



bad:333=0.081%  $\lambda$  (Å)  $z = 1.84766$

2 > +6.0 $\sigma$

8 < -6.0 $\sigma$