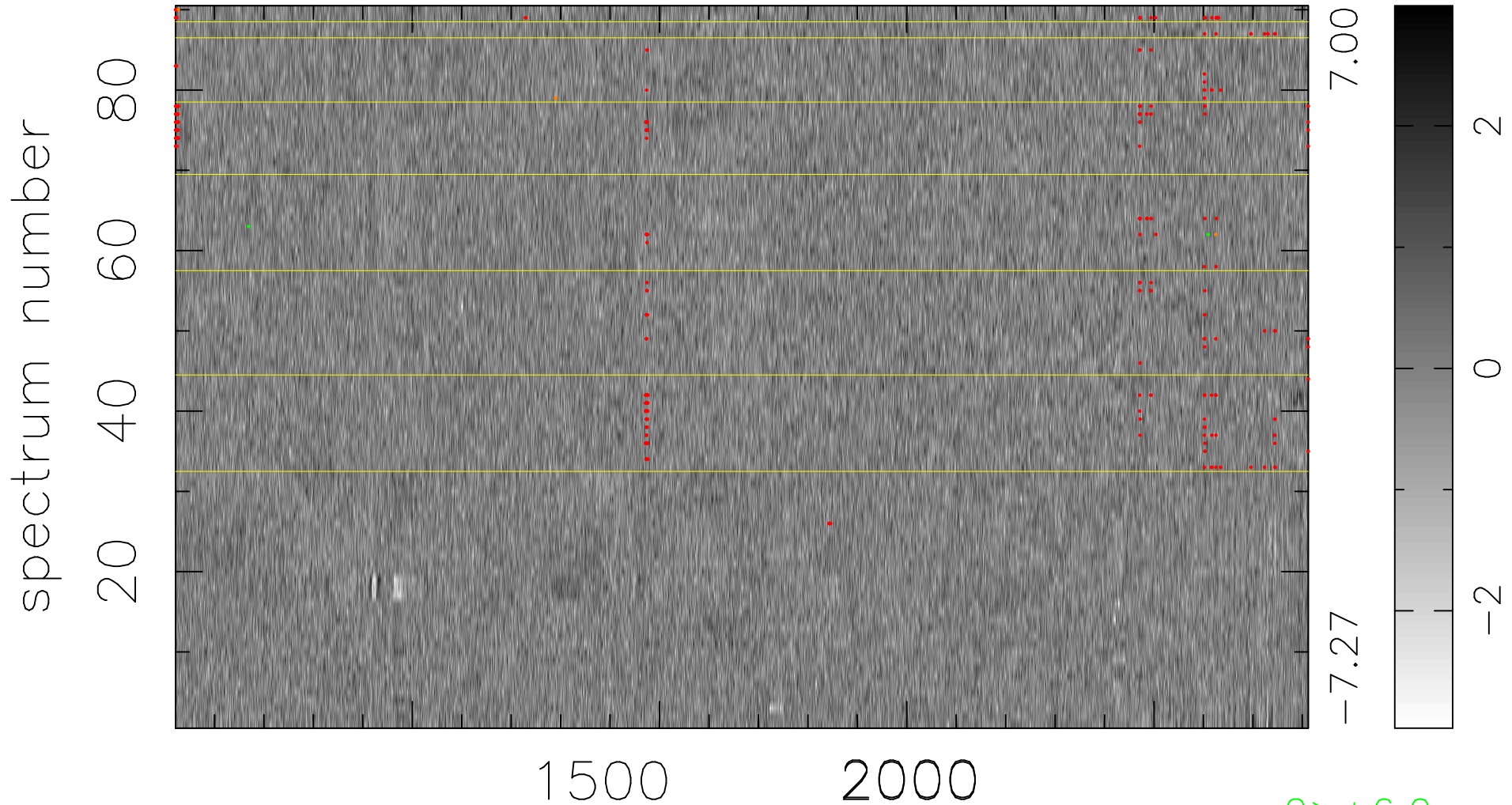


$$\chi(\lambda, t) = ( \text{Data} - \text{Model } \text{AC}_5\text{B}_7\text{F} ) / \sigma \chi$$

$$\chi^2 / (412380 - 5501) = 0.953 \Rightarrow 1.006$$

4582x90



bad:305=0.074%  $\lambda$  (Å)  $z = 2.56141$

2 > +6.0σ

4 < -6.0σ