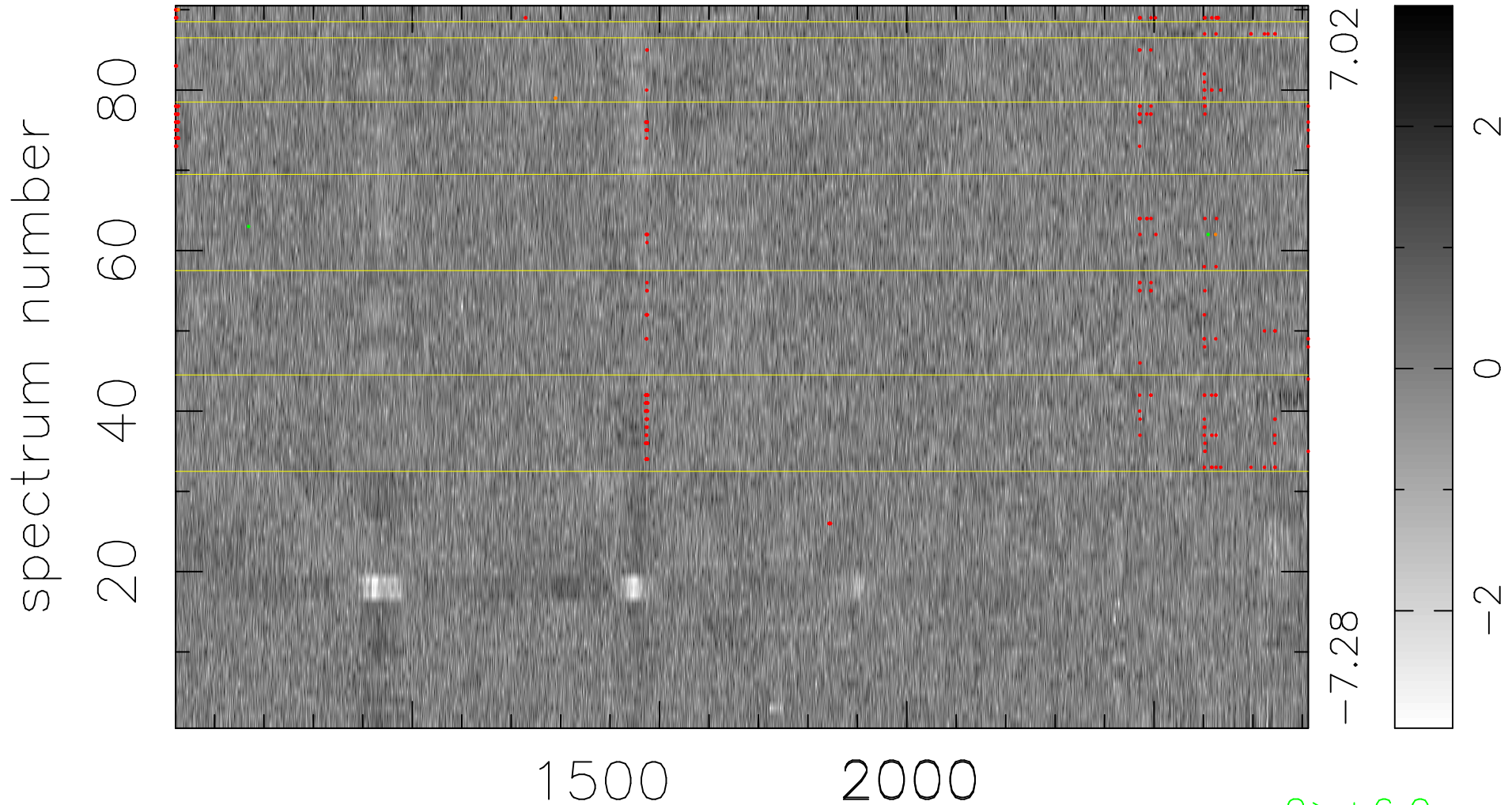


$$\chi(\lambda, t) = (\text{Data} - \text{Model AC}_5\text{F}) / \sigma \chi$$

$$\chi^2 / (412380 - 5339) = 0.976 \Rightarrow 1.007$$

4582x90



bad:305=0.074% λ (Å) $z = 2.56141$

2 > +6.0 σ

4 < -6.0 σ