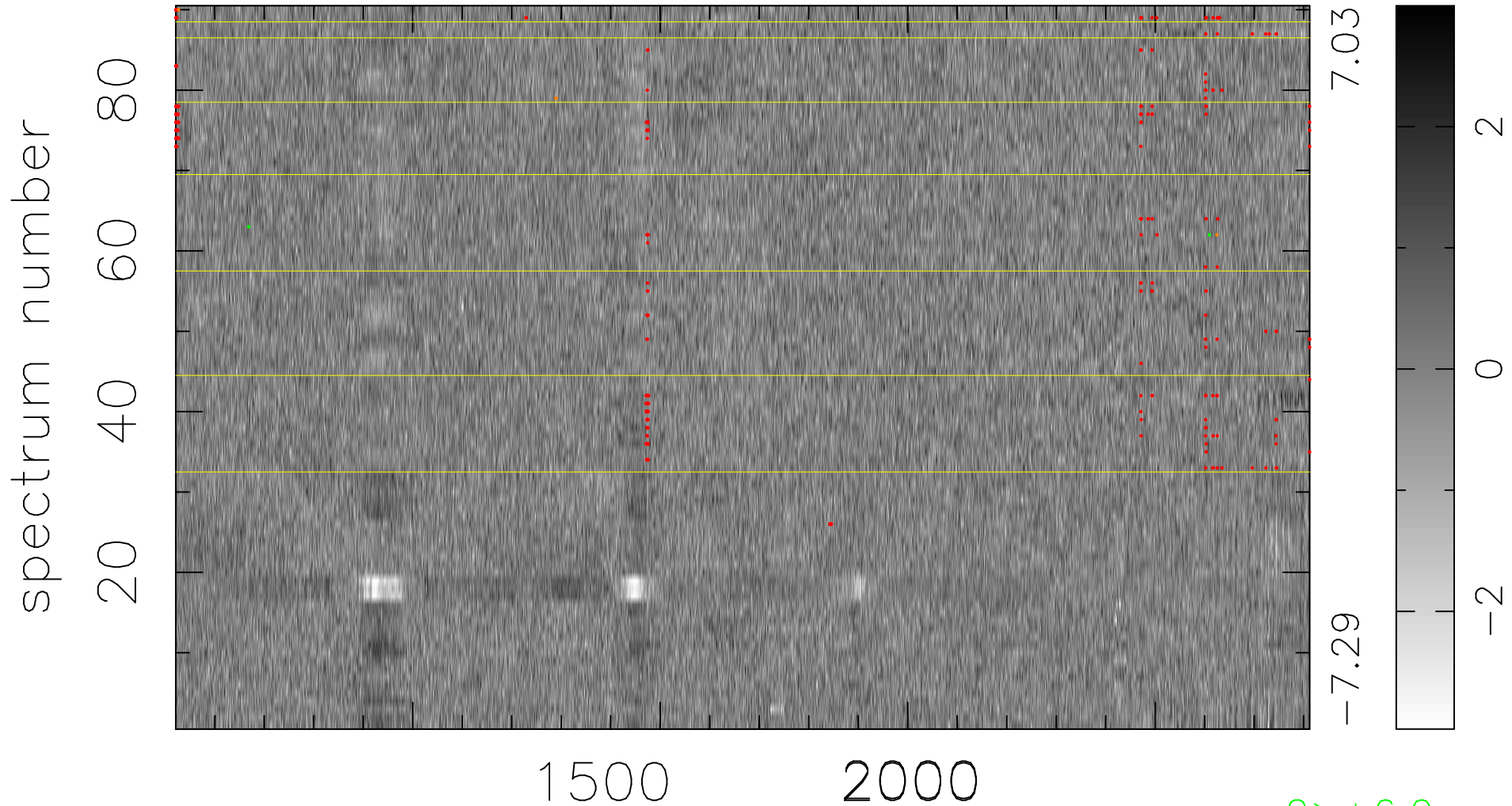


$$\chi(\lambda,t) = (\text{Data} - \text{Model } AC_5) / \sigma \chi$$

$$\chi^2 / (412380 - 5249) = 1.010 \Rightarrow 1.008$$

4582x90



bad:305=0.074% λ (Å) $z = 2.56141$

2 > +6.0σ

4 < -6.0σ