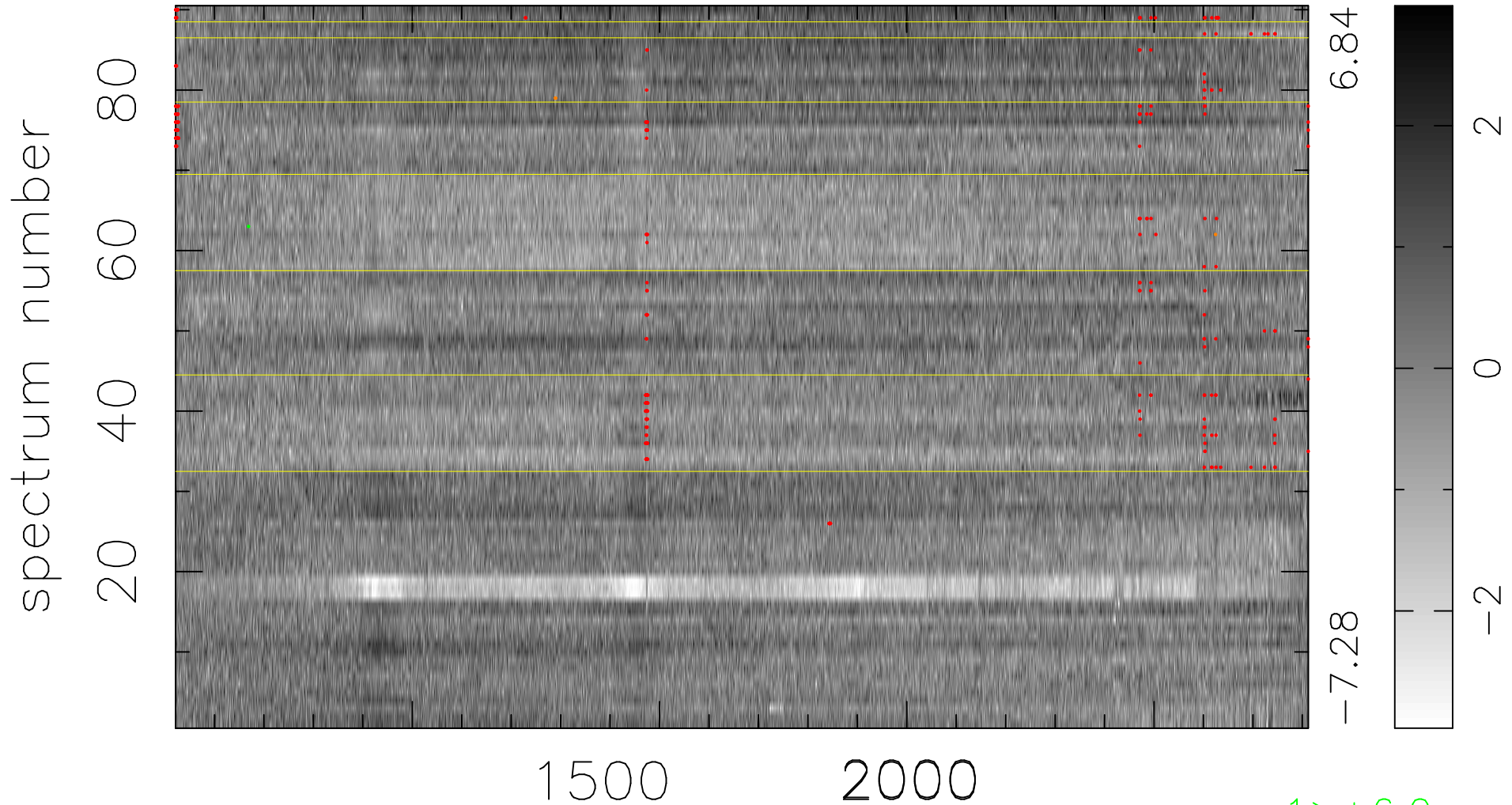


$$\chi(\lambda, t) = ( \text{Data} - \text{Model A} ) / \sigma \chi$$

$$\chi^2 / (412380 - 5249) = 1.436 \Rightarrow 1.005$$

4582x90



bad:305=0.074%  $\lambda$  (Å)  $z = 2.56141$

1 > +6.0 $\sigma$

3 < -6.0 $\sigma$