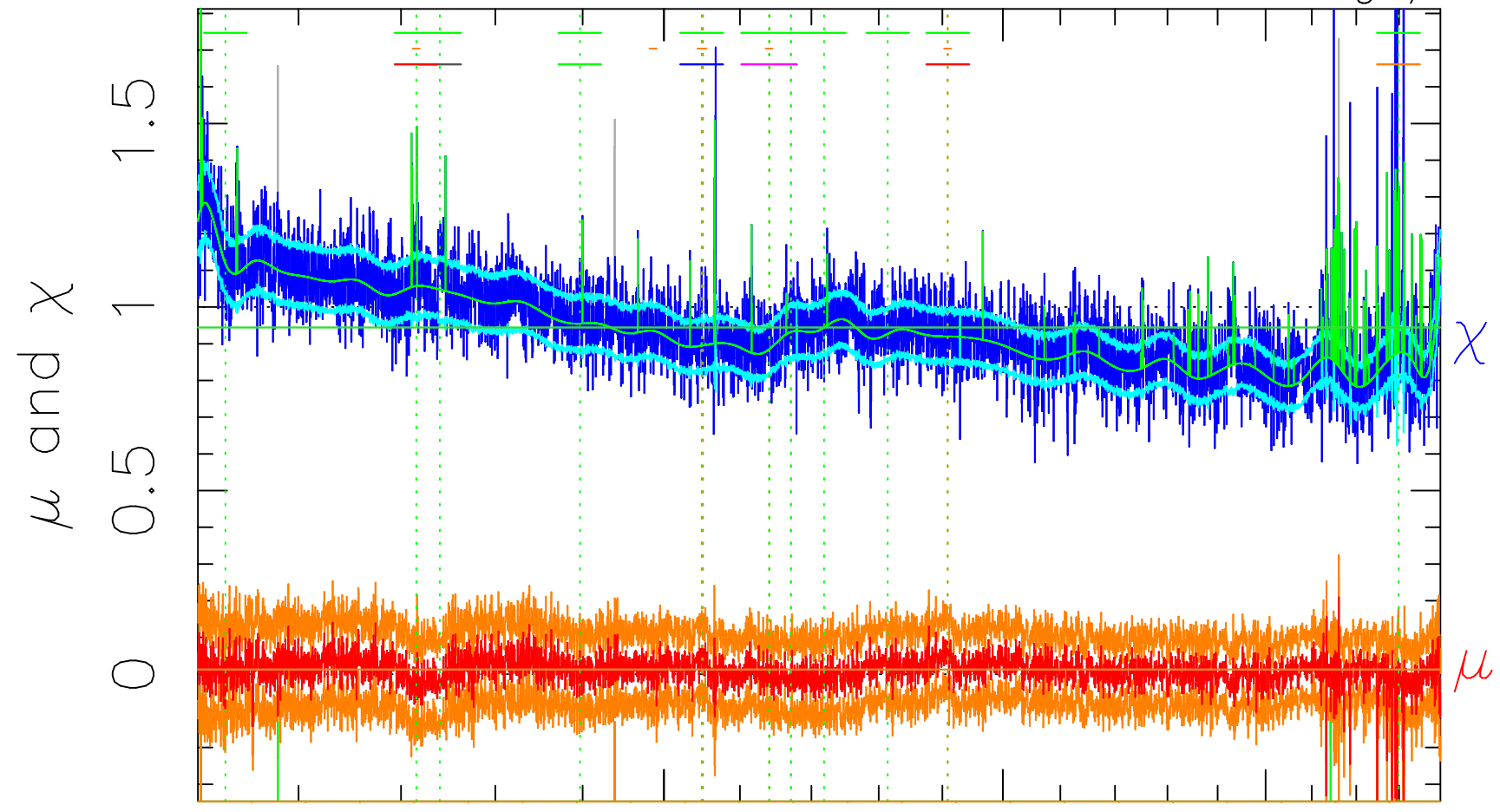


$$\mu = 0.012(23) \quad \chi = 0.944(85) \Rightarrow 0.944(85)$$

rm749

med(mad)

AC<sub>5</sub>B<sub>7</sub>F



1500      2000  
 $\lambda$  (Å)  $z = 2.56141$

$2 > +6.0\sigma$   
 $4 < -6.0\sigma$