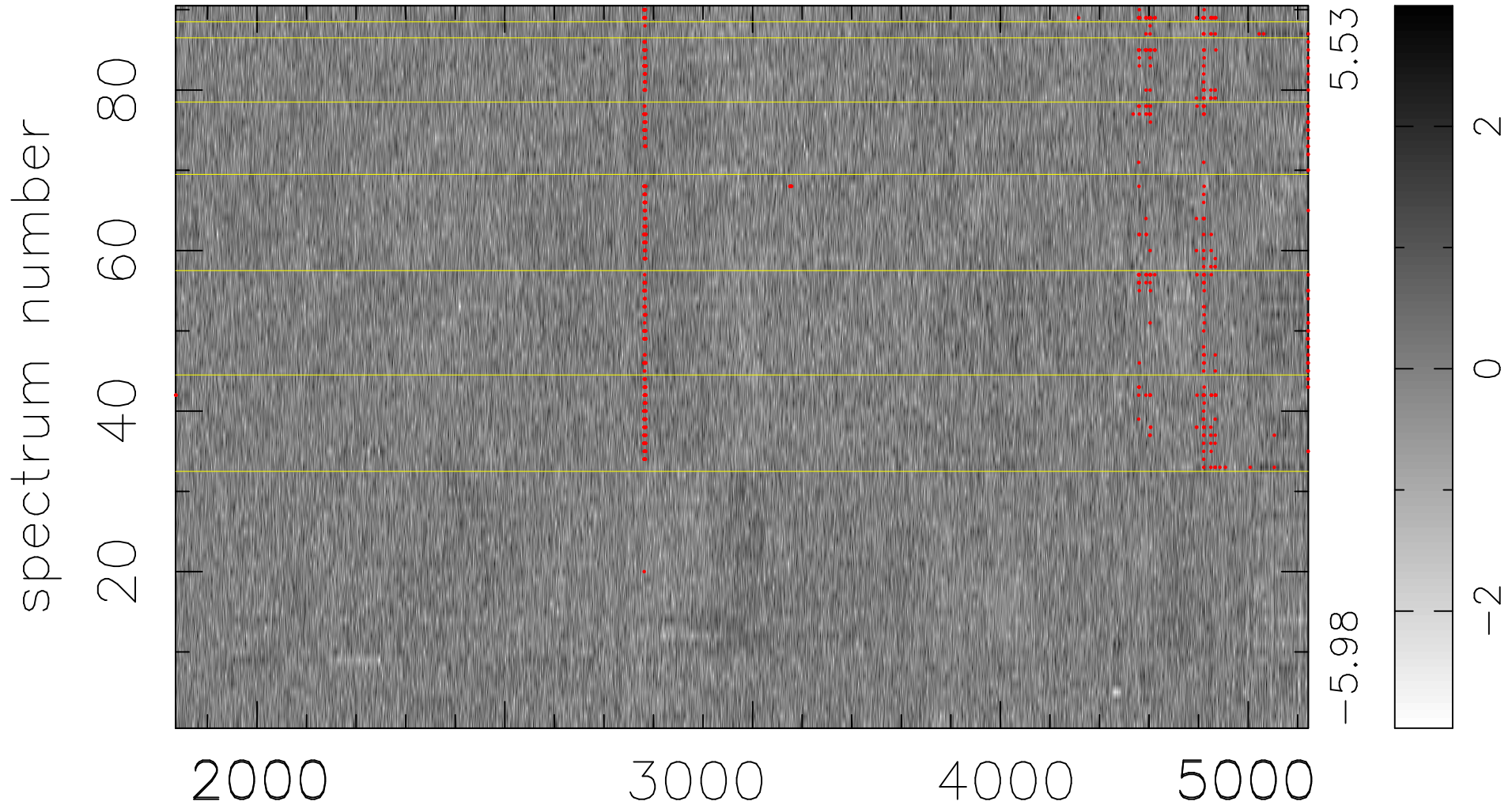


$$\chi(\lambda, t) = (\text{Data} - \text{Model } \text{AC}_5\text{B}_4\text{F}) / \sigma \chi$$

$$\chi^2 / (411480 - 5214) = 1.039 \Rightarrow 1.007$$

4572 × 90



bad:614=0.15%

λ (Å) $z = 0.94962$