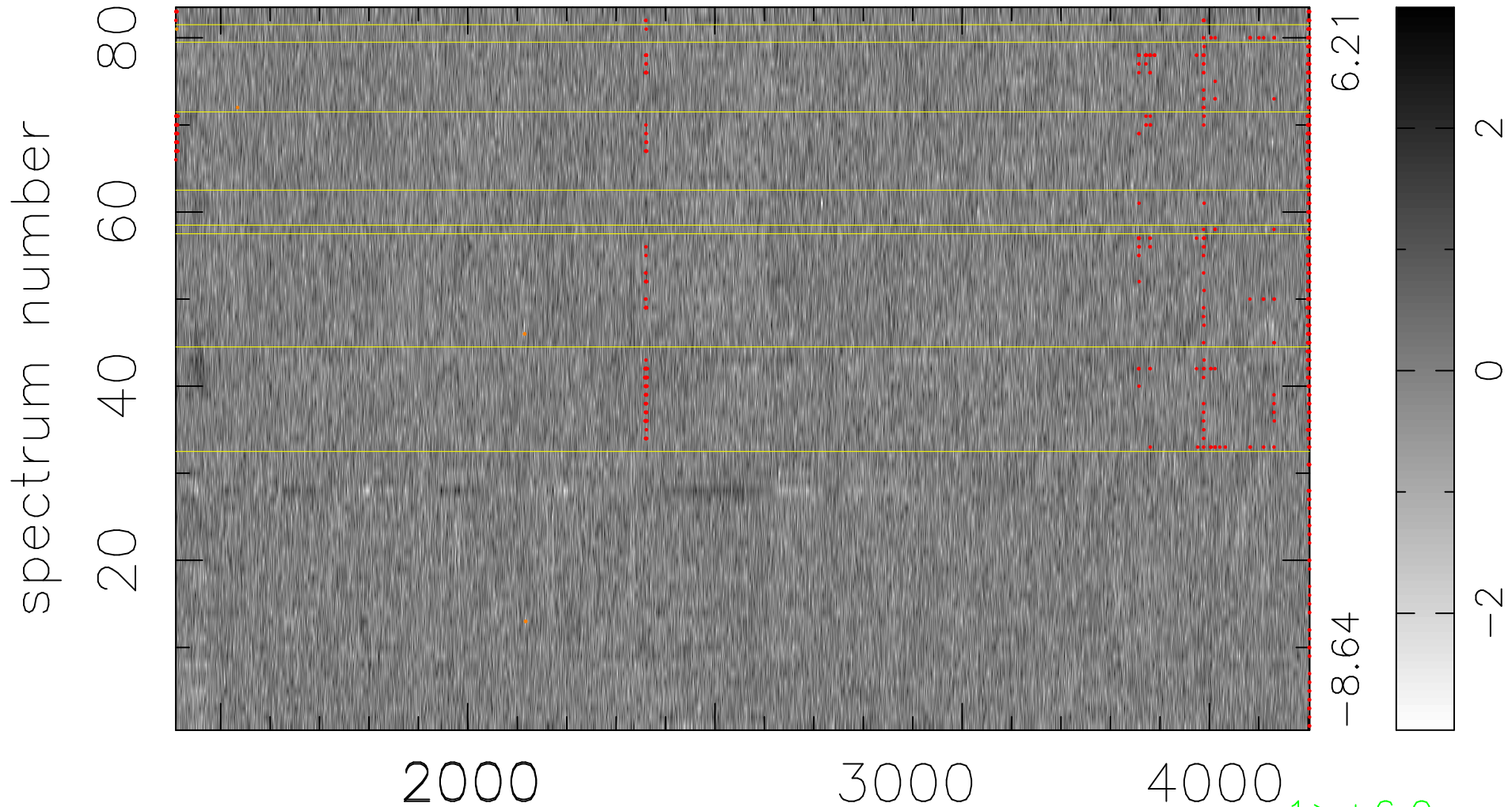


$$\chi(\lambda, t) = (\text{Data} - \text{Model } \text{AC}_5\text{B}_4\text{F}) / \sigma \chi$$

$$\chi^2 / (380804 - 5196) = 0.953 \Rightarrow 1.008$$

4588x83



bad:759=0.20%

λ (Å) $z = 1.36774$

1 > +6.0σ

6 < -6.0σ