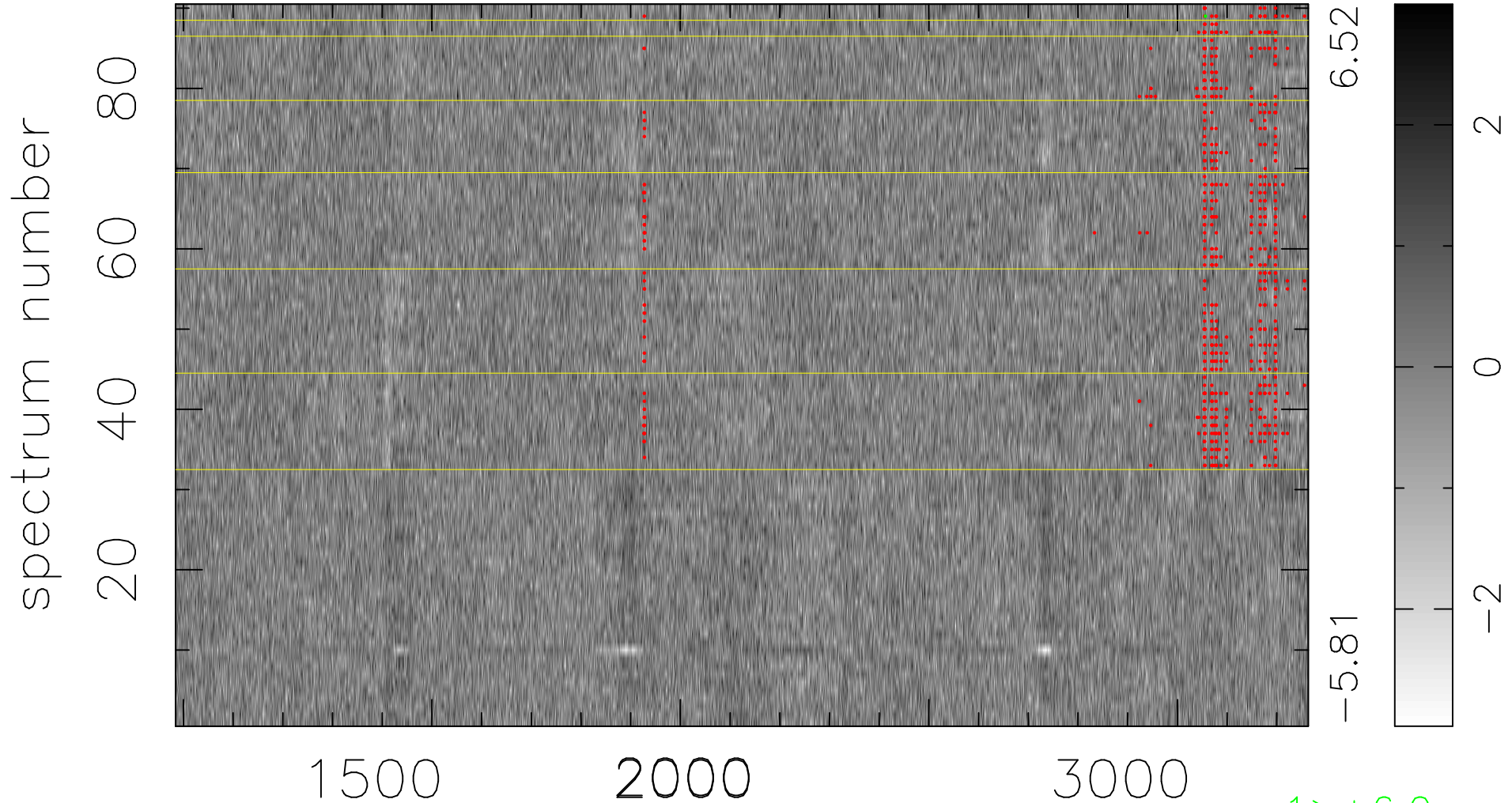


$$\chi(\lambda, t) = ( \text{Data} - \text{Model AC}_5\text{F} ) / \sigma \chi$$

$$\chi^2 / (410310 - 5134) = 0.902 \Rightarrow 1.007$$

4559x90



bad:616=0.15%

$\lambda$  (Å)  $z = 1.89092$

1 > +6.0 $\sigma$