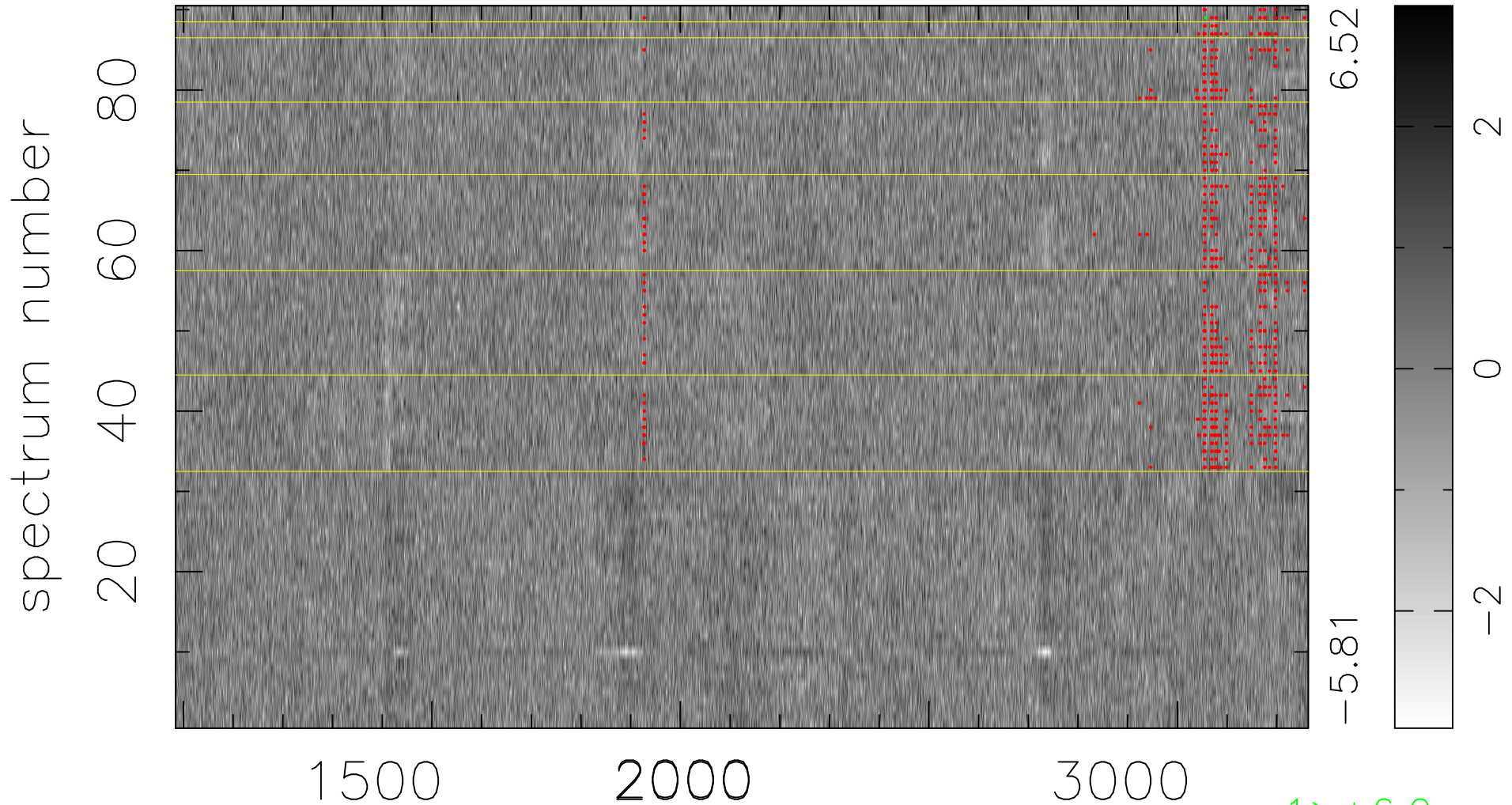


$$\chi(\lambda,t) = ( \text{Data} - \text{Model } AC_5 ) / \sigma \chi$$

$$\chi^2 / (410310 - 5044) = 0.902 \Rightarrow 1.007$$

4559x90



6.52  
-5.81

2  
0  
-2

1 > +6.0σ

bad:616=0.15%

λ (Å) z = 1.89092