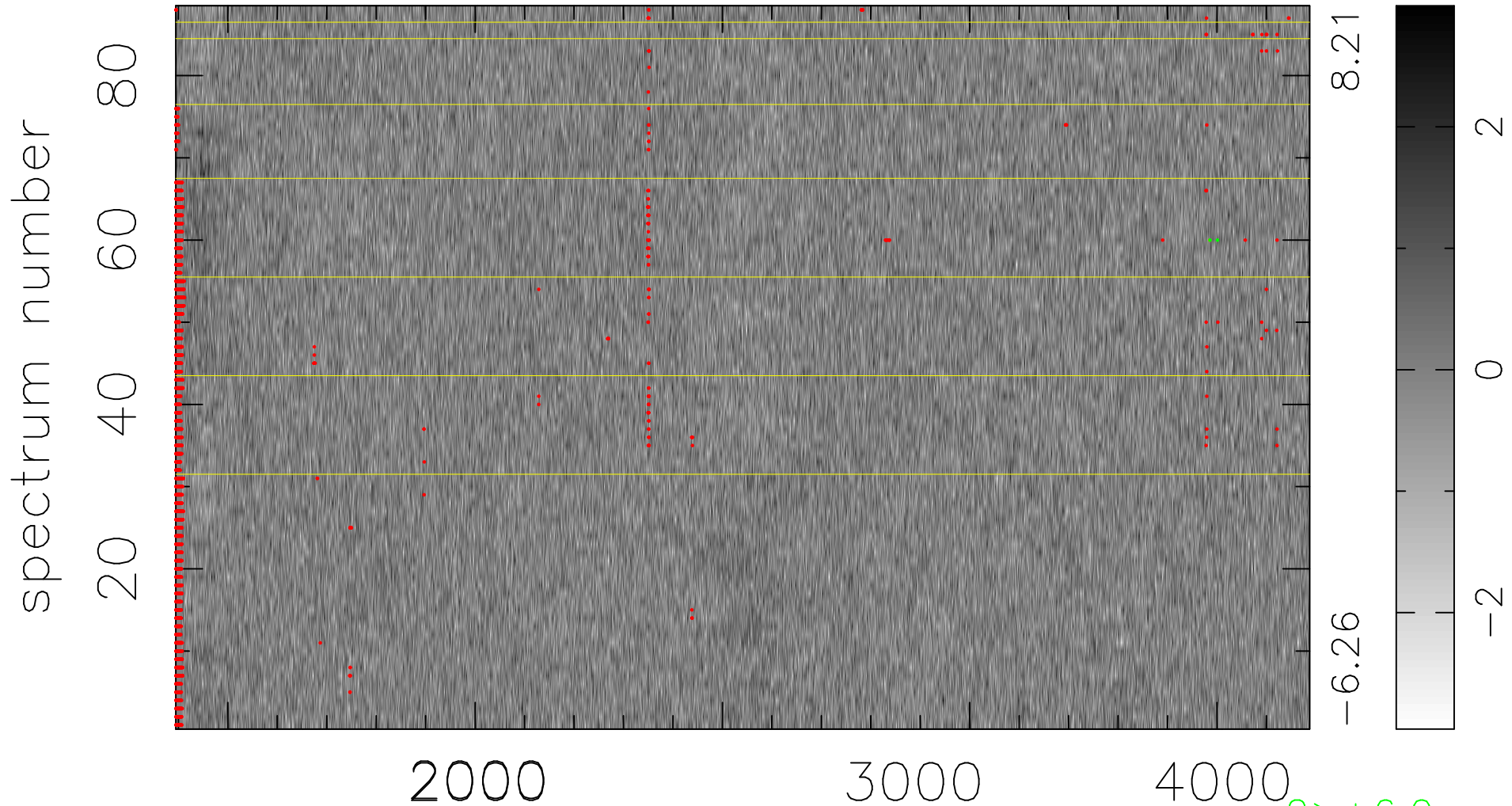


$$\chi(\lambda, t) = ( \text{Data} - \text{Model } \text{AC}_5\text{B}_4\text{F} ) / \sigma \chi$$

$$\chi^2 / (403568 - 5188) = 0.964 \Rightarrow 1.008$$

4586x88



bad:1986=0.49%  $\lambda$  (Å)  $z = 1.37872$

2 > +6.0 $\sigma$

1 < -6.0 $\sigma$