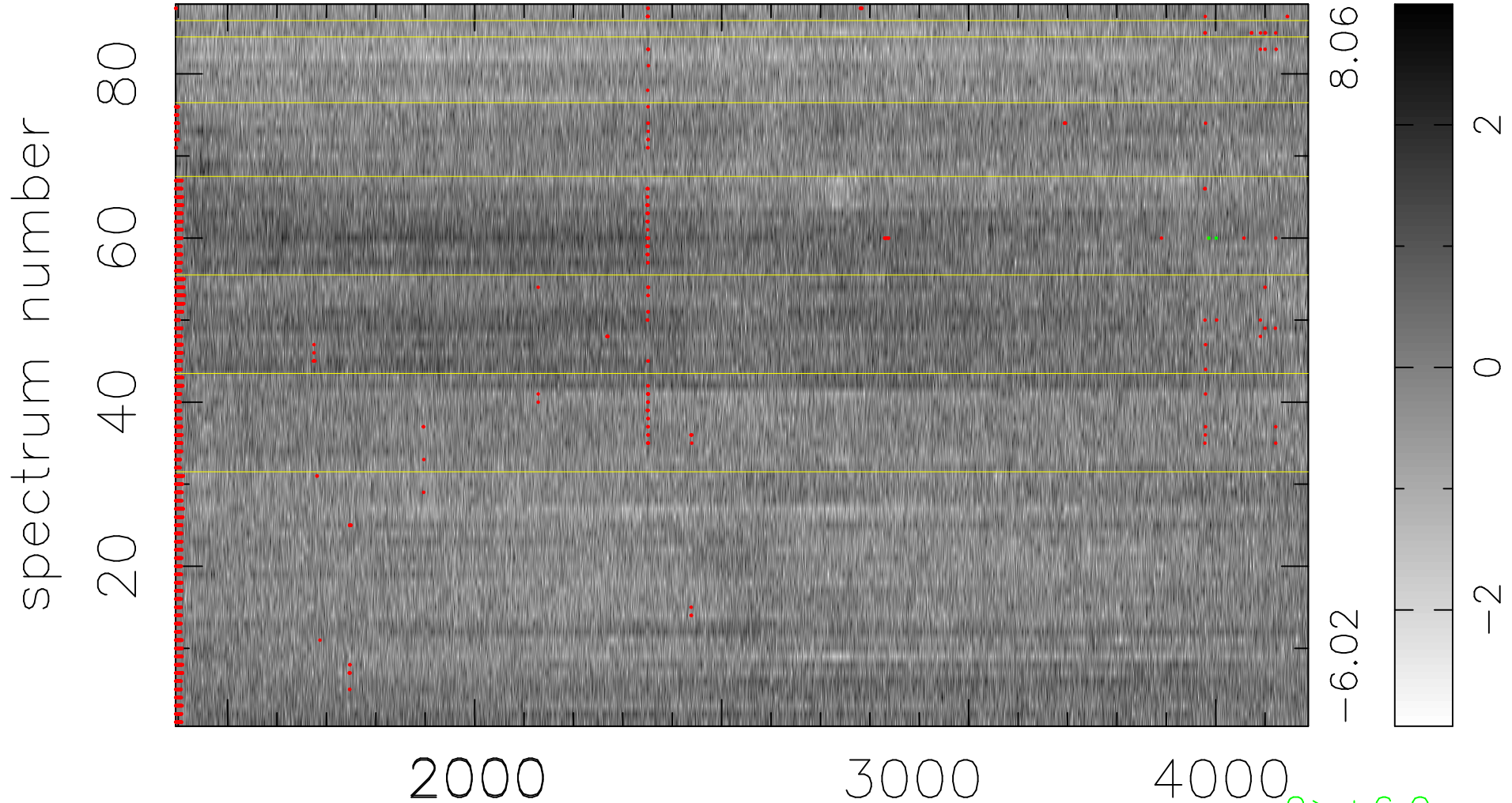


$$\chi(\lambda, t) = (\text{Data} - \text{Model A}) / \sigma \chi$$

$$\chi^2 / (403568 - 4955) = 1.070 \Rightarrow 1.007$$

4586x88



bad:1986=0.49% λ (Å) $z = 1.37872$

2 > +6.0 σ

1 < -6.0 σ