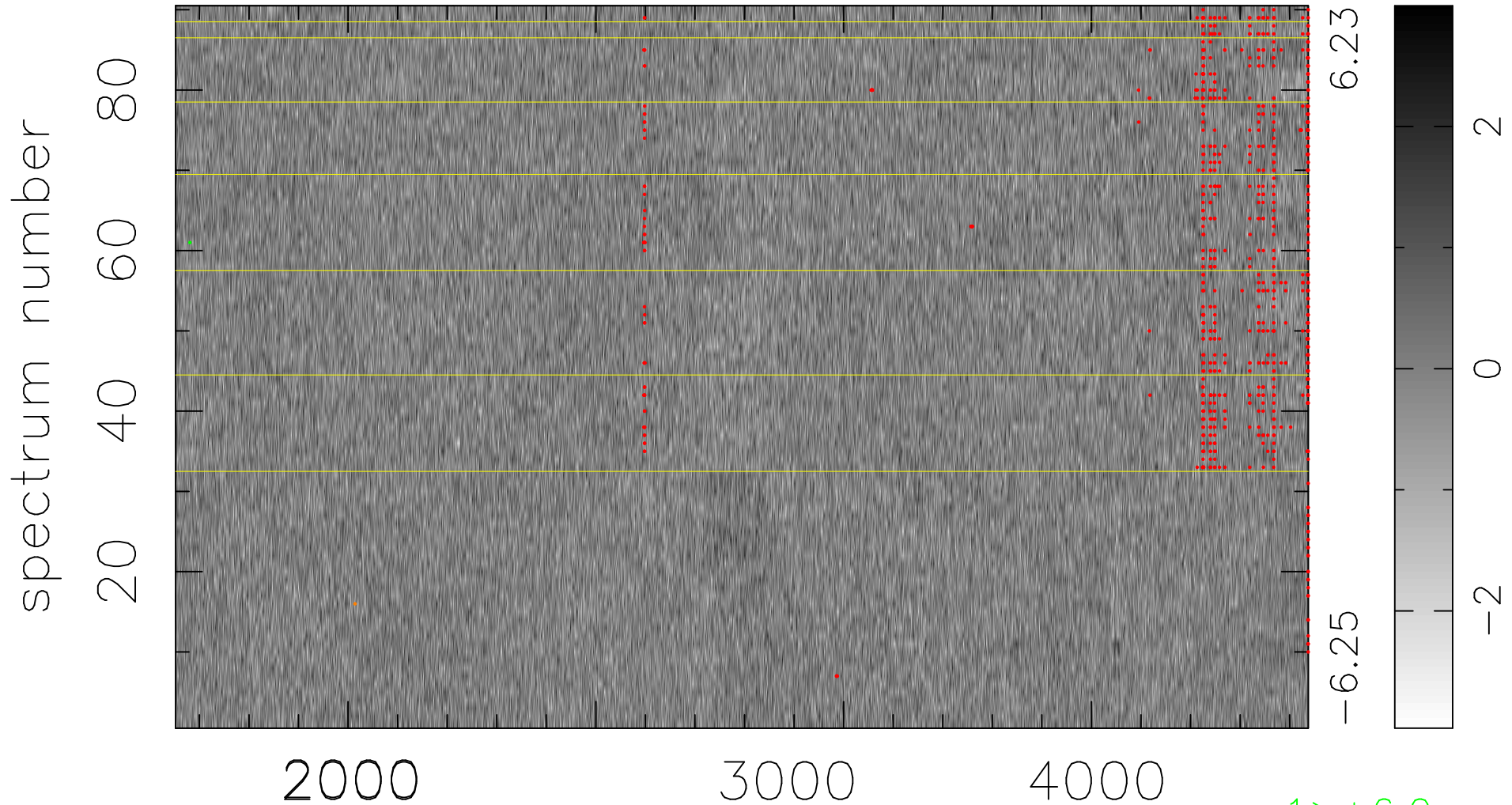


$$\chi(\lambda, t) = ( \text{Data} - \text{Model AC}_5\text{F} ) / \sigma \chi$$

$$\chi^2 / (411480 - 5031) = 0.885 \Rightarrow 1.007$$

4572x90



bad:751=0.18%

$\lambda$  (Å)  $z = 1.12275$

1 > +6.0σ

1 < -6.0σ