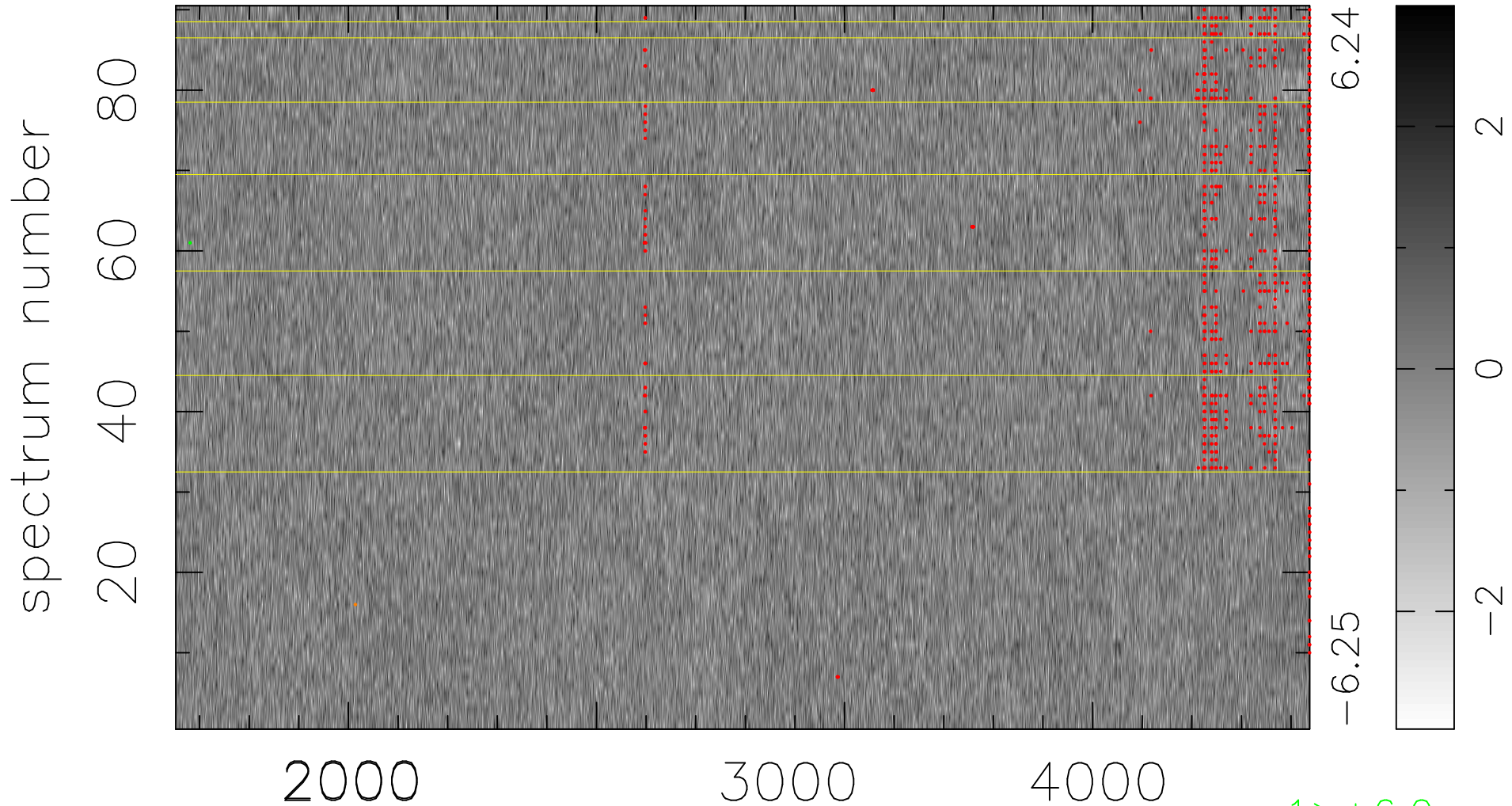


$$\chi(\lambda,t) = (\text{Data} - \text{Model } \text{AC}_5\text{B}_4\text{F}) / \sigma \chi$$

$$\chi^2 / (411480 - 5160) = 0.884 \Rightarrow 1.007$$

4572x90



bad:751=0.18%

λ (Å) $z = 1.12275$

1 > +6.0 σ

1 < -6.0 σ