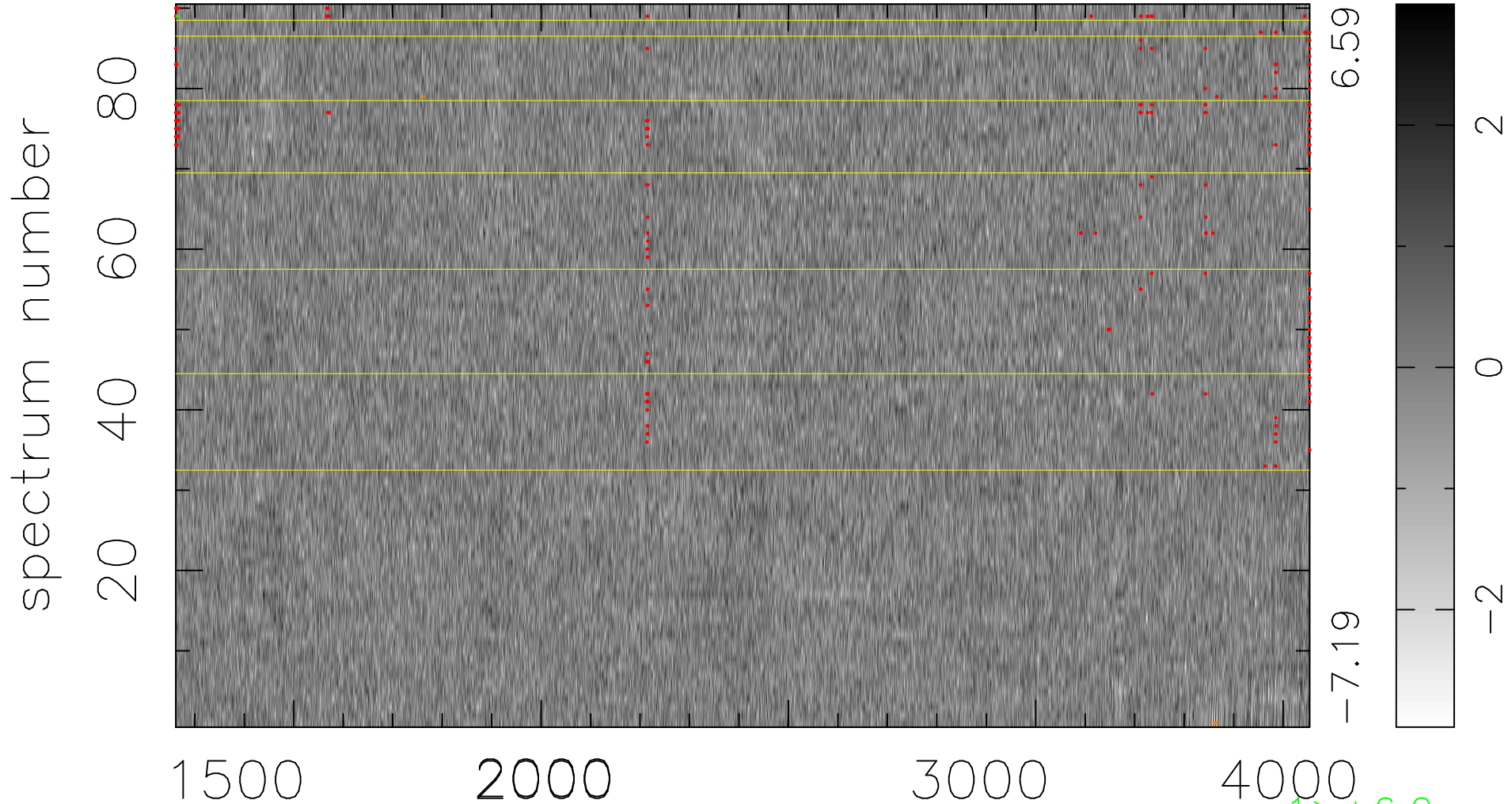


$$\chi(\lambda,t) = ( \text{Data} - \text{Model } AC_5 ) / \sigma \chi$$

$$\chi^2 / (412650 - 4977) = 0.903 \Rightarrow 1.007$$

4585x90



bad:309=0.075%  $\lambda$  (Å)  $z = 1.53218$

1 > +6.0σ

4 < -6.0σ