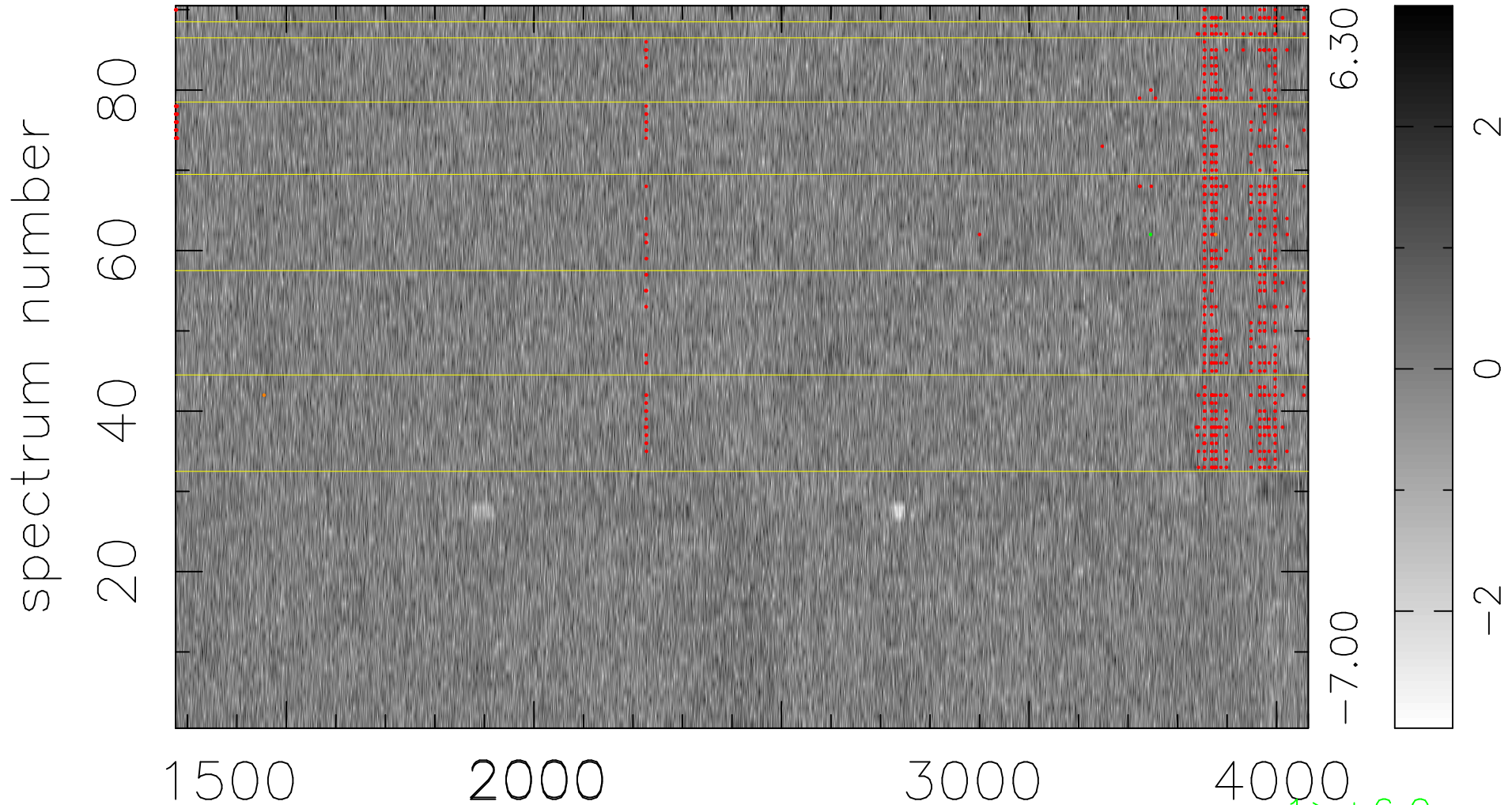


$$\chi(\lambda, t) = (\text{Data} - \text{Model AC}_5\text{F}) / \sigma \chi$$

$$\chi^2 / (411840 - 5051) = 0.910 \Rightarrow 1.007$$

4576 × 90



bad:675=0.16%

λ (Å) $z = 1.51830$

1 > +6.0σ

2 < -6.0σ