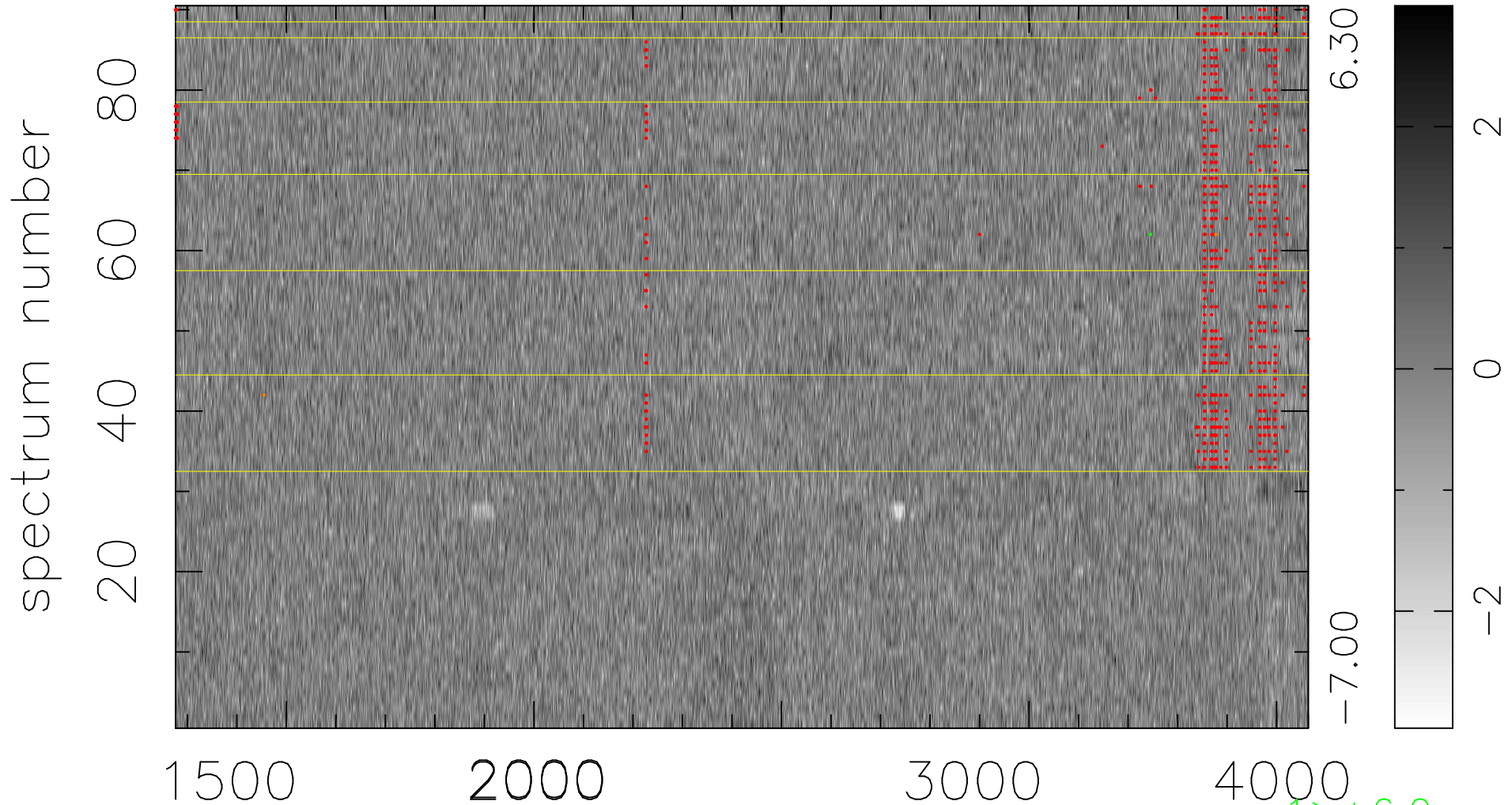


$$\chi(\lambda,t) = ( \text{Data} - \text{Model } AC_5 ) / \sigma \chi$$

$$\chi^2 / (411840 - 4961) = 0.910 \Rightarrow 1.007$$

4576x90



bad:675=0.16%

$\lambda$  (Å)  $z = 1.51830$

1 > +6.0 $\sigma$

2 < -6.0 $\sigma$