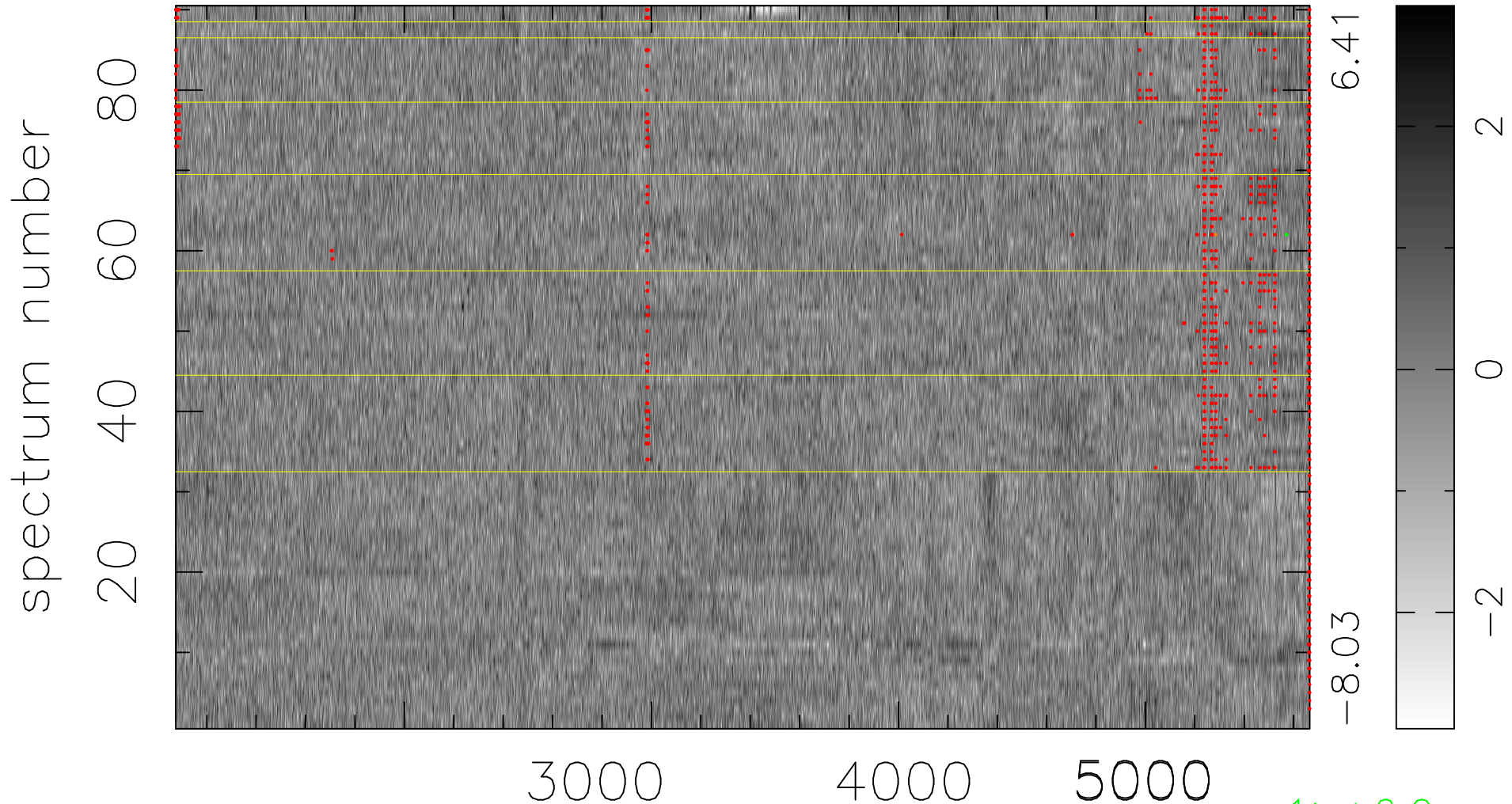


$$\chi(\lambda, t) = ( \text{Data} - \text{Model } \text{AC}_5\text{B}_3\text{F} ) / \sigma \chi$$

$$\chi^2 / (413190 - 5119) = 1.061 \Rightarrow 1.005$$

4591 × 90



bad:1105=0.27%  $\lambda$  (Å)  $z = 0.77068$

1 > +6.0σ

1 < -6.0σ