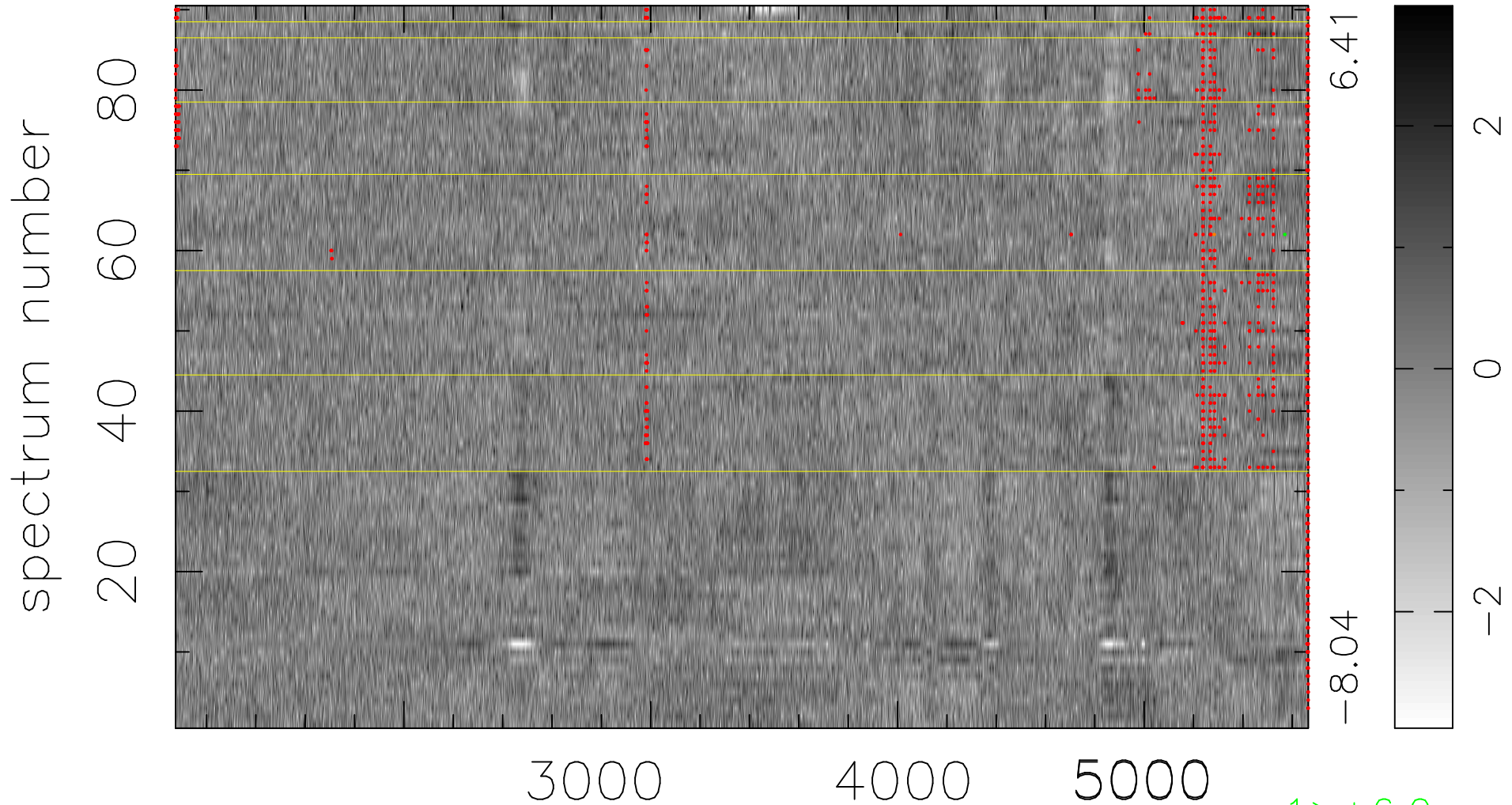


$$\chi(\lambda, t) = ( \text{Data} - \text{Model } AC_5 ) / \sigma \chi$$

$$\chi^2 / (413190 - 4878) = 1.109 \Rightarrow 1.005$$

4591 × 90



bad:1105=0.27%     $\lambda$  (Å)     $z = 0.77068$

1 > +6.0σ

1 < -6.0σ