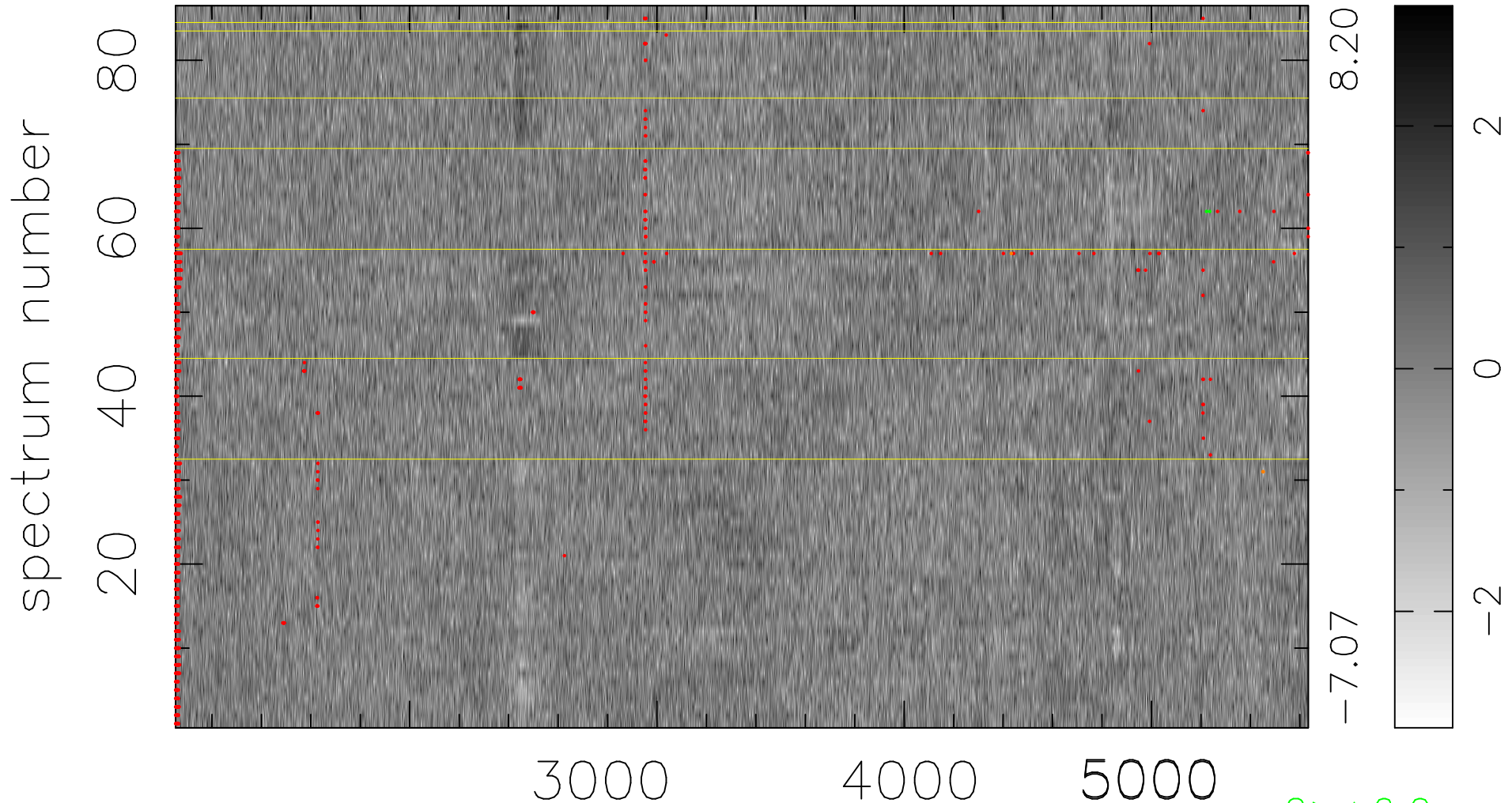


$$\chi(\lambda, t) = (\text{Data} - \text{Model AC}_5\text{F}) / \sigma \chi$$

$$\chi^2 / (394052 - 4948) = 0.923 \Rightarrow 1.006$$

4582x86



bad:1145=0.29% λ (Å) $z = 0.78318$

2 > +6.0 σ

3 < -6.0 σ