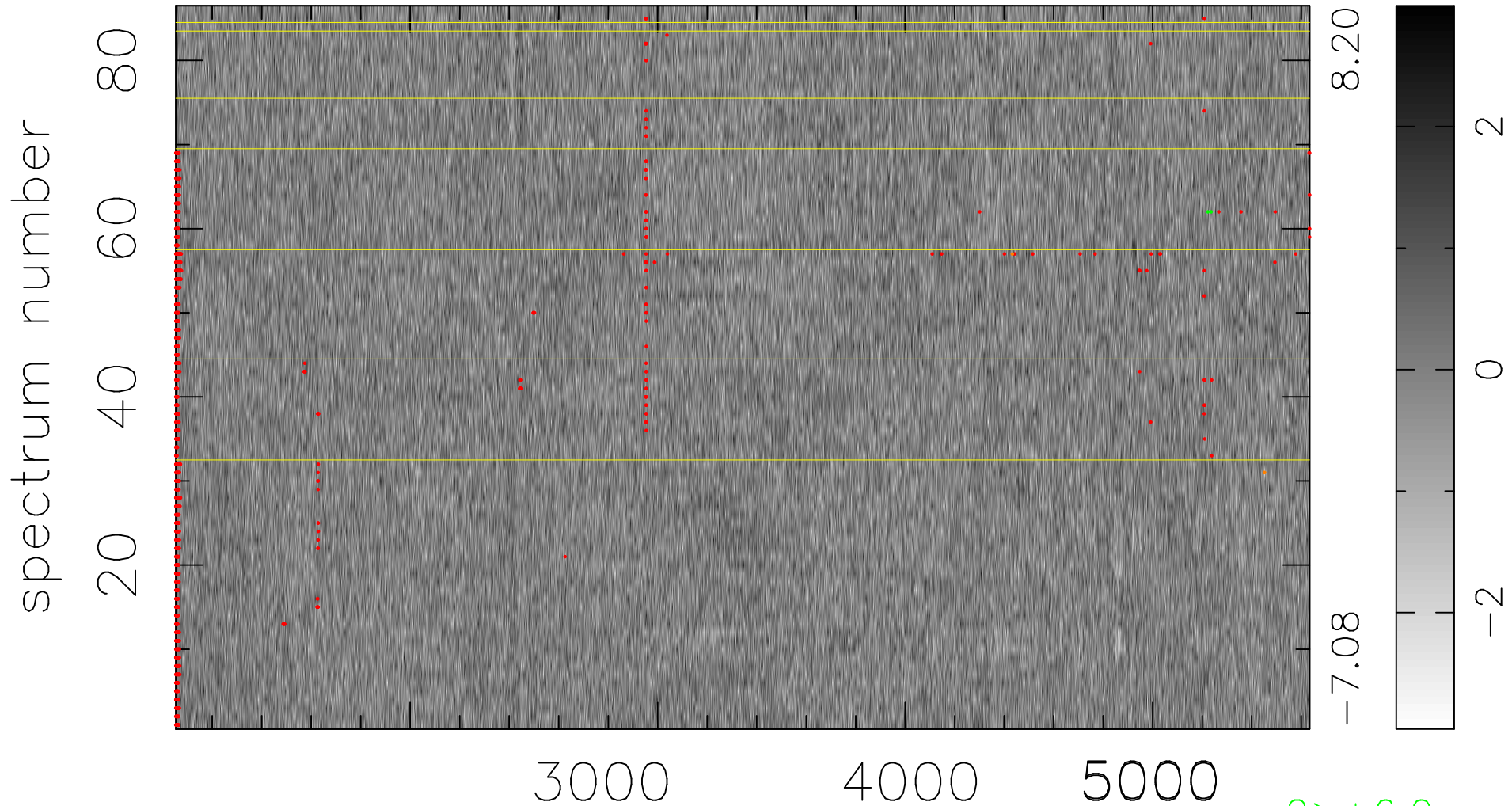


$$\chi(\lambda, t) = ( \text{Data} - \text{Model } \text{AC}_5\text{B}_3\text{F} ) / \sigma \chi$$

$$\chi^2 / (394052 - 5049) = 0.915 \Rightarrow 1.006$$

4582x86



bad:1145=0.29%  $\lambda$  (Å)  $z = 0.78318$

2 > +6.0 $\sigma$

3 < -6.0 $\sigma$