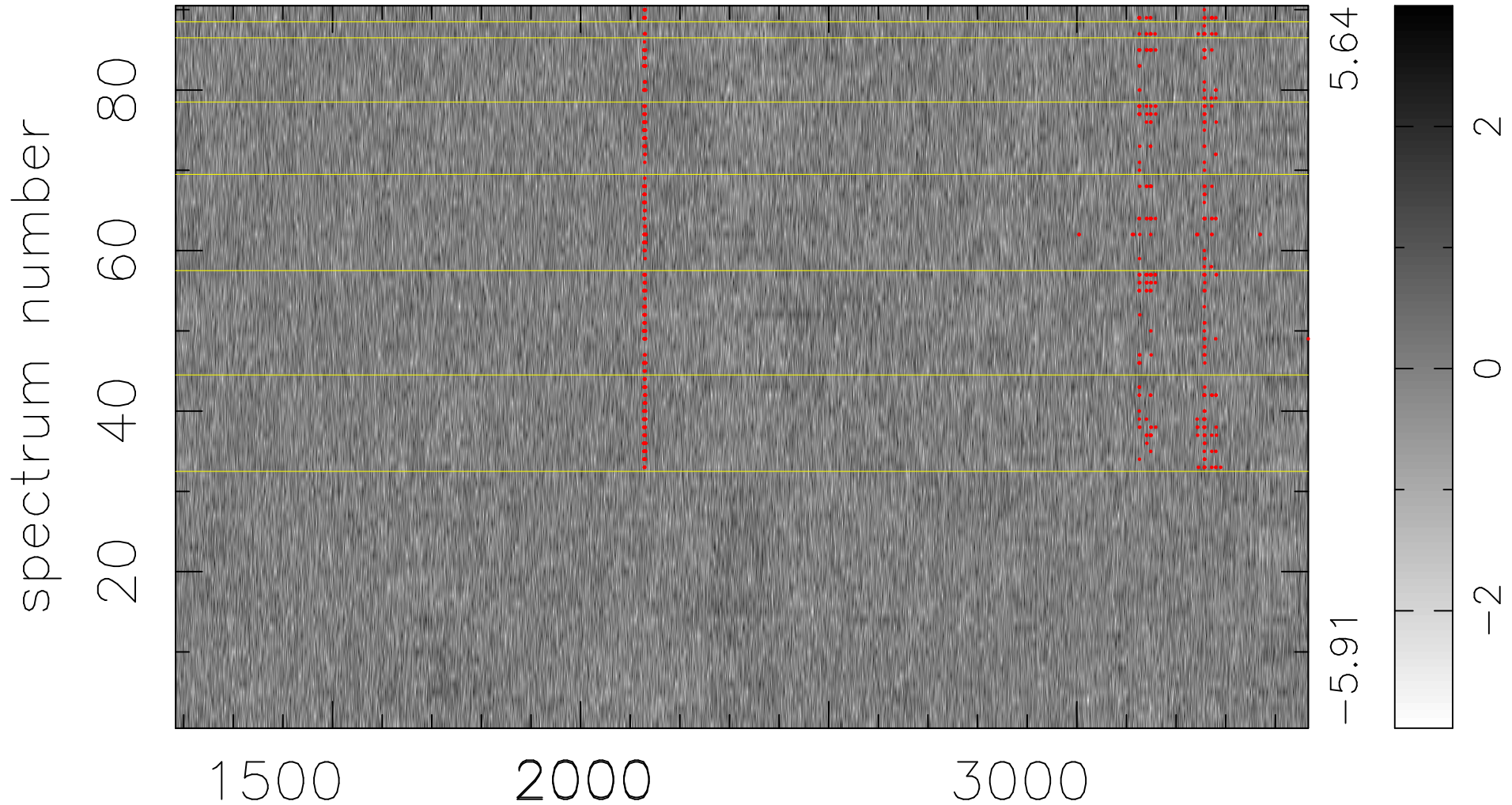


$$\chi(\lambda, t) = ( \text{Data} - \text{Model } \text{AC}_5\text{B}_5\text{F} ) / \sigma \chi$$

$$\chi^2 / (410940 - 5294) = 0.988 \Rightarrow 1.008$$

4566 × 90



bad:587=0.14%     $\lambda$  (Å)  $z = 1.63413$