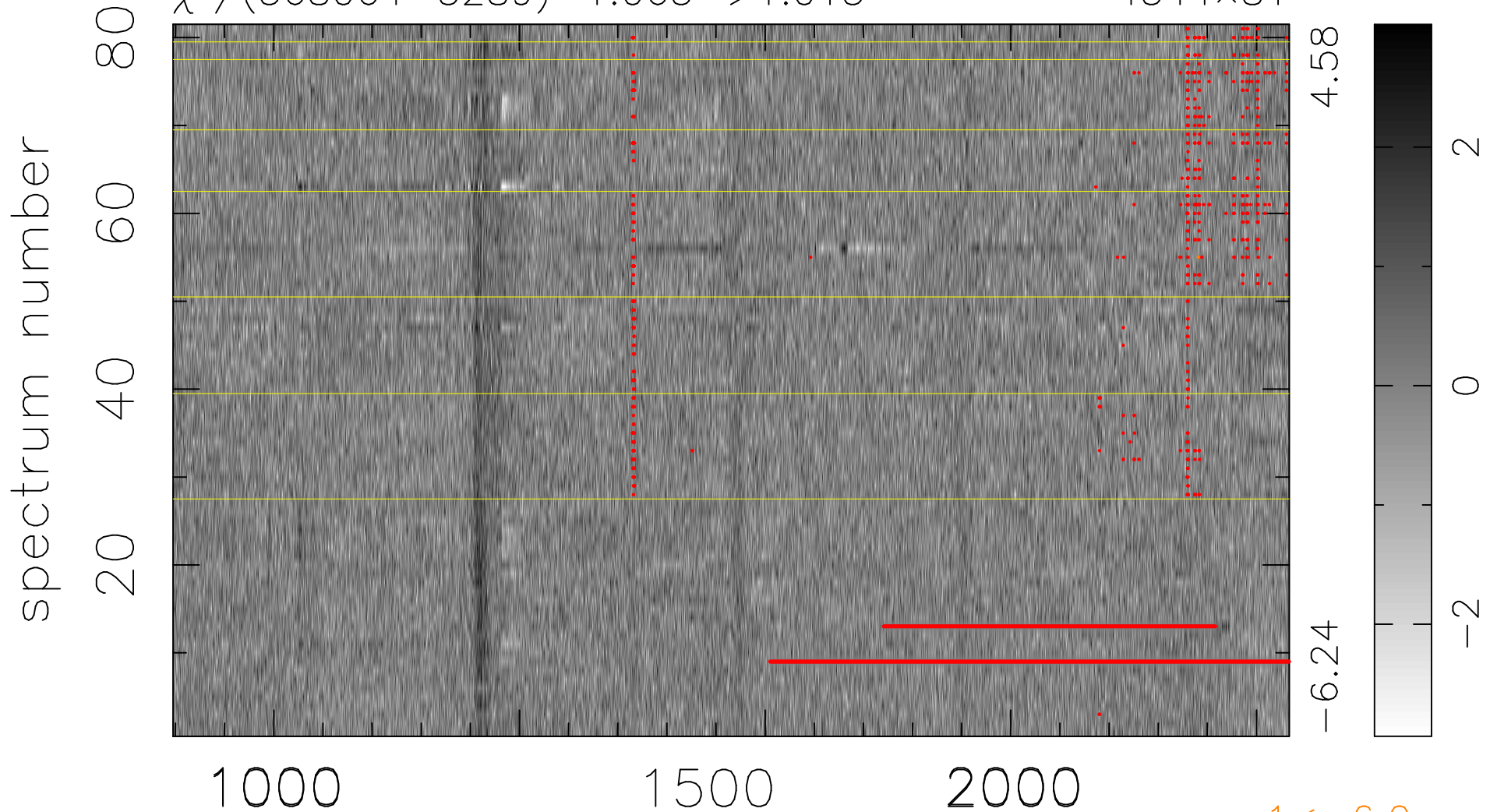


$$\chi(\lambda, t) = (\text{Data} - \text{Model } \text{AC}_5\text{B}_6\text{F}) / \sigma \chi$$

$$\chi^2 / (368064 - 5289) = 1.063 \Rightarrow 1.015$$

4544x81



4.58

-6.24

2

0

-2

1 < -6.0σ

bad:4122=1.1%

λ (Å) z = 2.98187