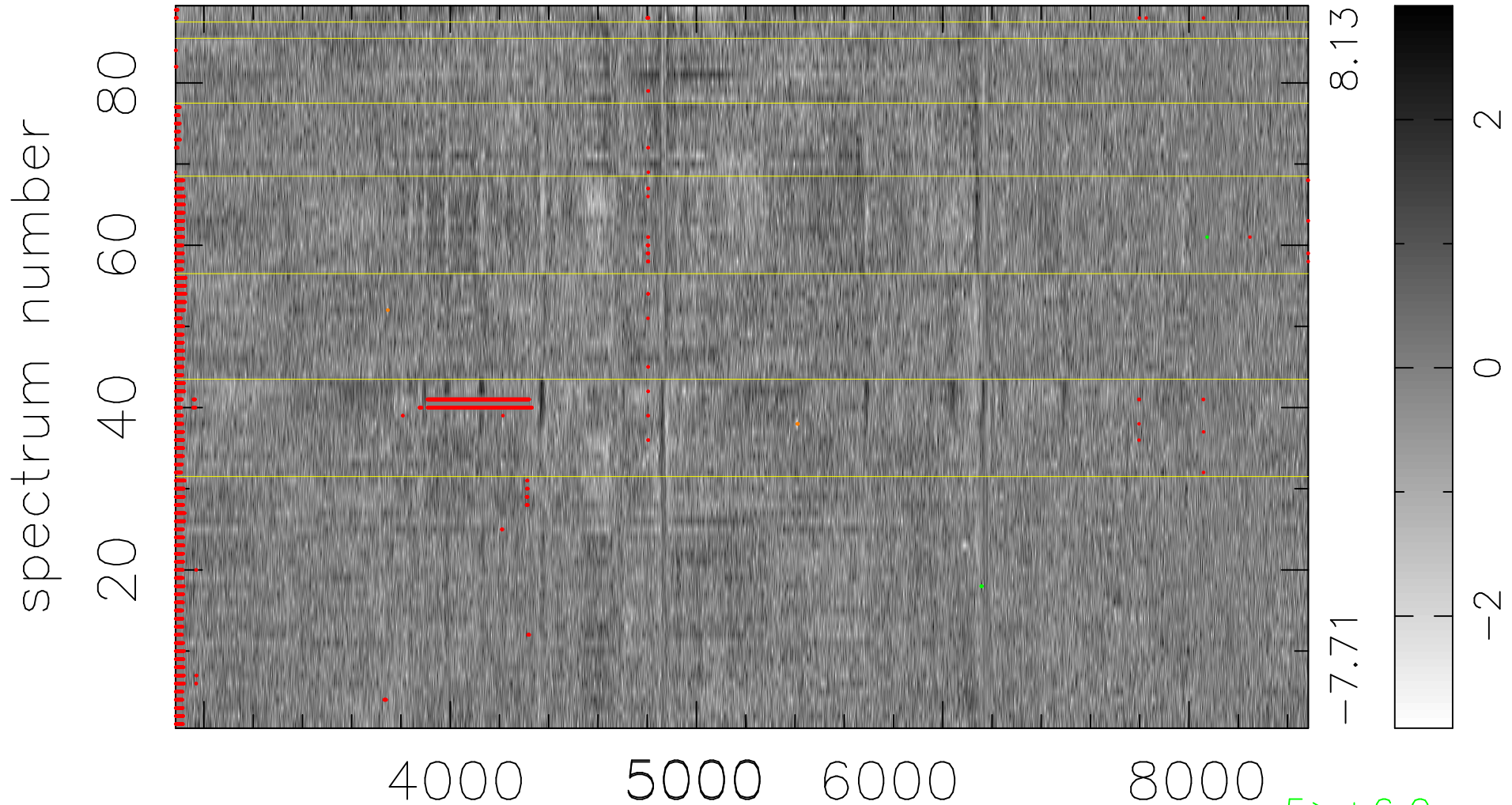


$$\chi(\lambda,t) = (\text{Data} - \text{Model } \text{AC}_5\text{B}_4\text{F}) / \sigma \chi$$

$$\chi^2 / (409400 - 5279) = 0.946 \Rightarrow 0.987$$

4600x89



bad:3266=0.80% λ (Å) $z = 0.16466$

5 > +6.0 σ

6 < -6.0 σ