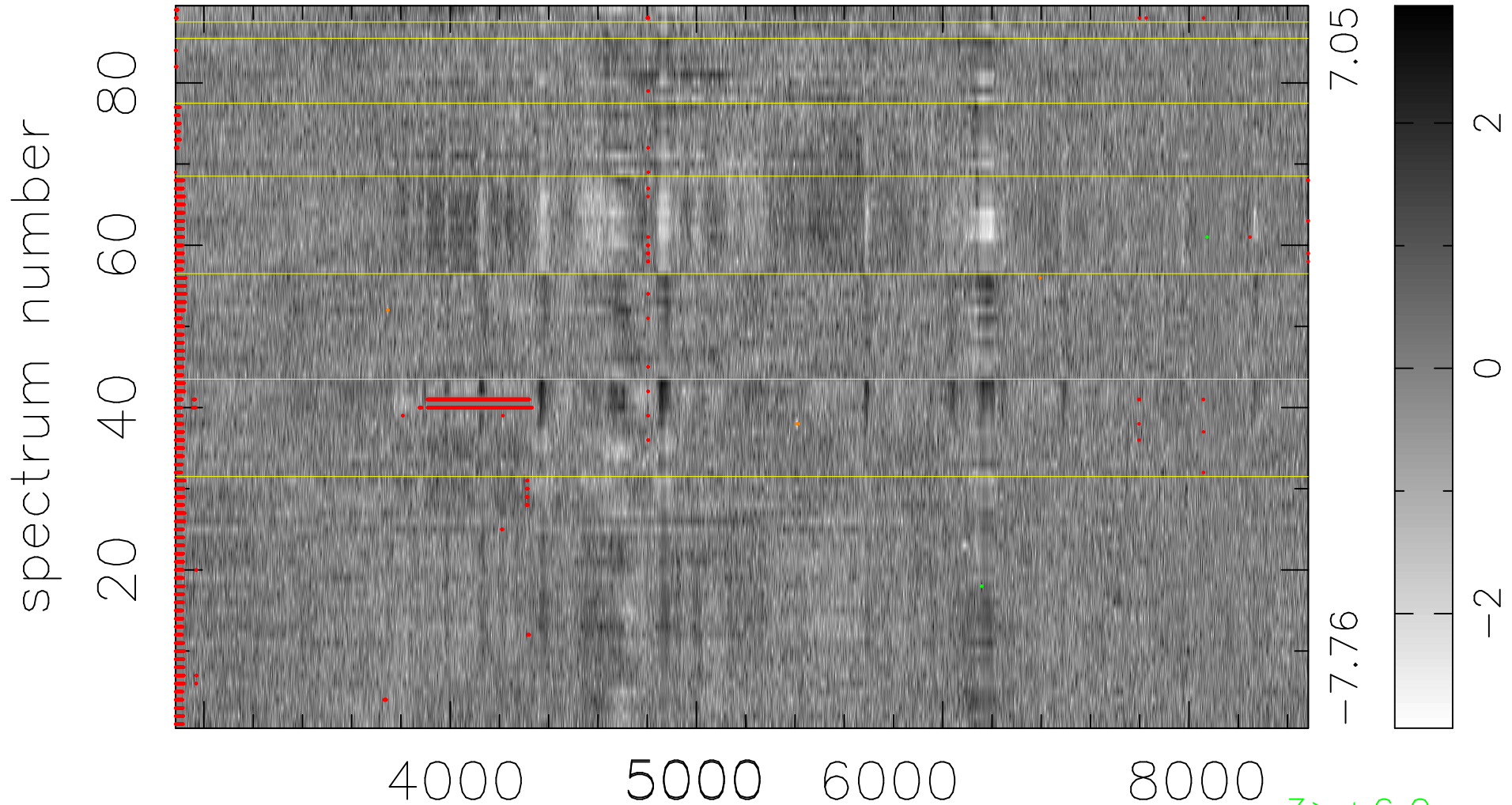


$$\chi(\lambda,t) = (\text{Data} - \text{Model } AC_5) / \sigma \chi$$

$$\chi^2 / (409400 - 4996) = 1.131 \Rightarrow 0.997$$

4600x89



bad:3266=0.80% λ (Å) $z = 0.16466$

3 > +6.0 σ

7 < -6.0 σ