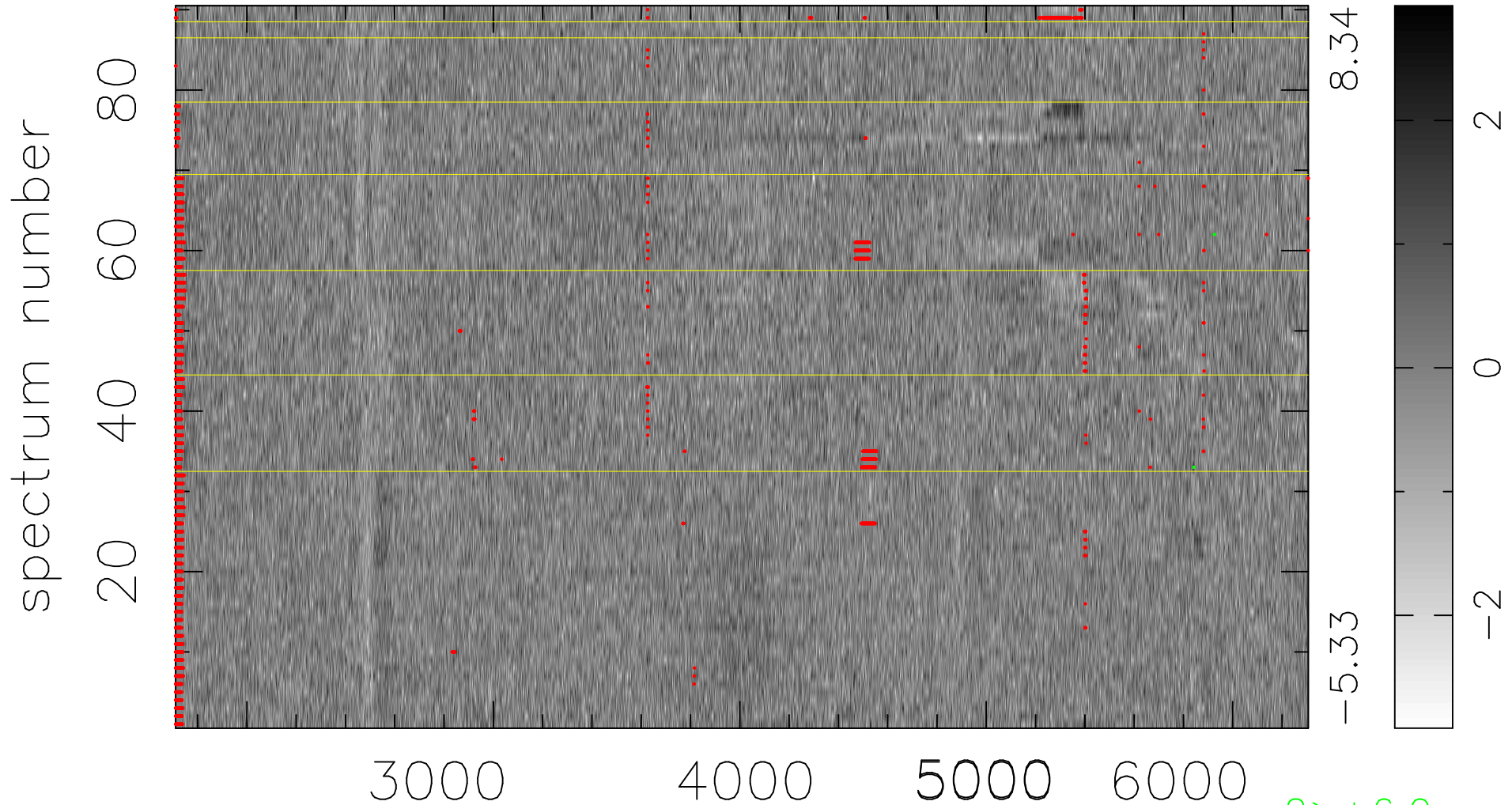


$$\chi(\lambda, t) = (\text{Data} - \text{Model } \text{AC}_5\text{B}_4\text{F}) / \sigma \chi$$

$$\chi^2 / (413640 - 5204) = 0.918 \Rightarrow 0.988$$

4596x90



bad:2895=0.70% λ (Å) $z = 0.52718$