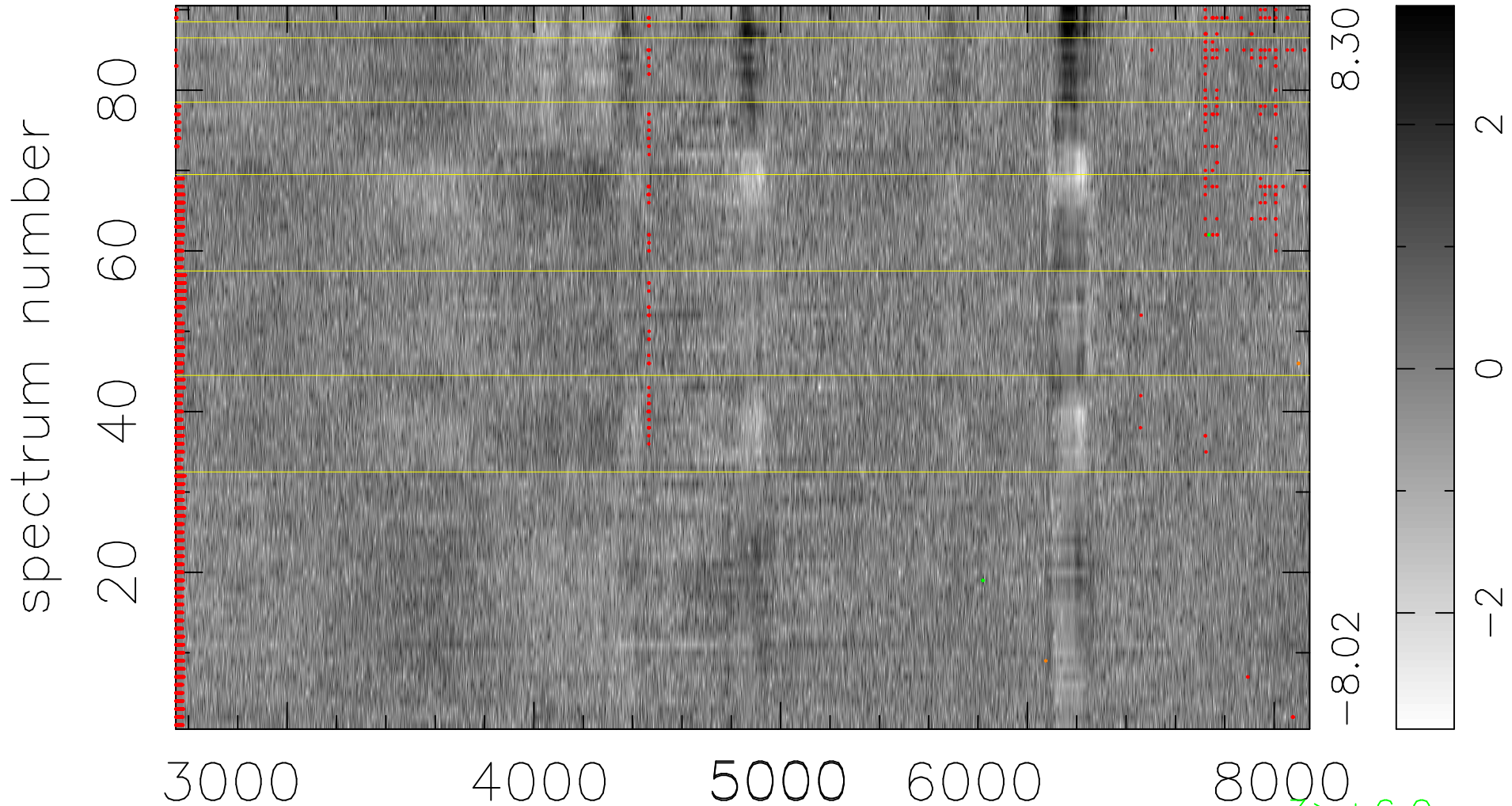


$$\chi(\lambda, t) = (\text{Data} - \text{Model AC}_5\text{F}) / \sigma \chi$$

$$\chi^2 / (413640 - 4971) = 1.092 \Rightarrow 1.002$$

4596x90



bad:2475=0.60% λ (Å) $z = 0.25869$

3 > +6.0σ

4 < -6.0σ