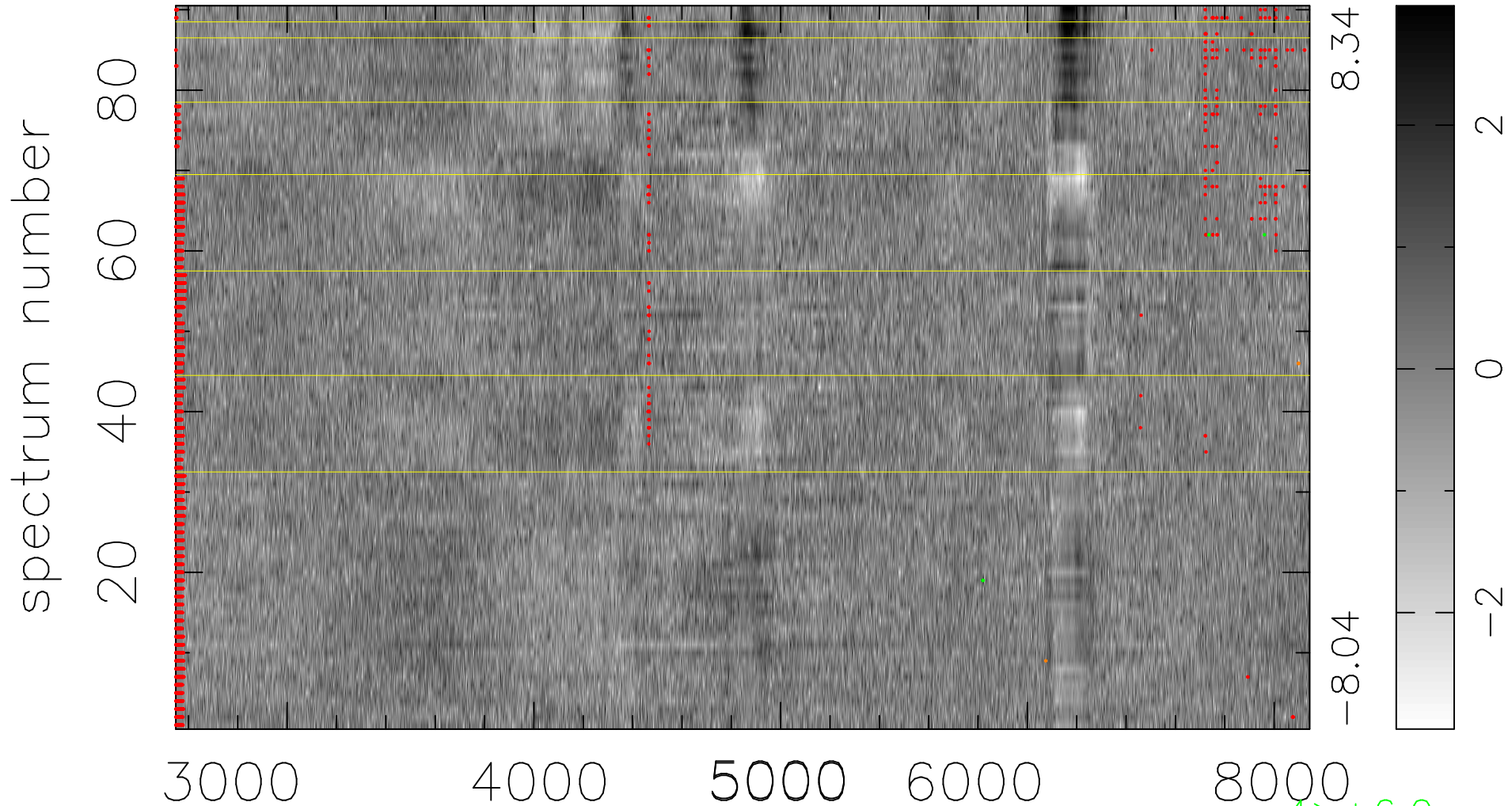


$$\chi(\lambda,t) = (\text{Data} - \text{Model } AC_5) / \sigma \chi$$

$$\chi^2 / (413640 - 4881) = 1.148 \Rightarrow 1.004$$

4596x90



bad:2475=0.60% λ (Å) $z = 0.25869$

4 > +6.0 σ

4 < -6.0 σ