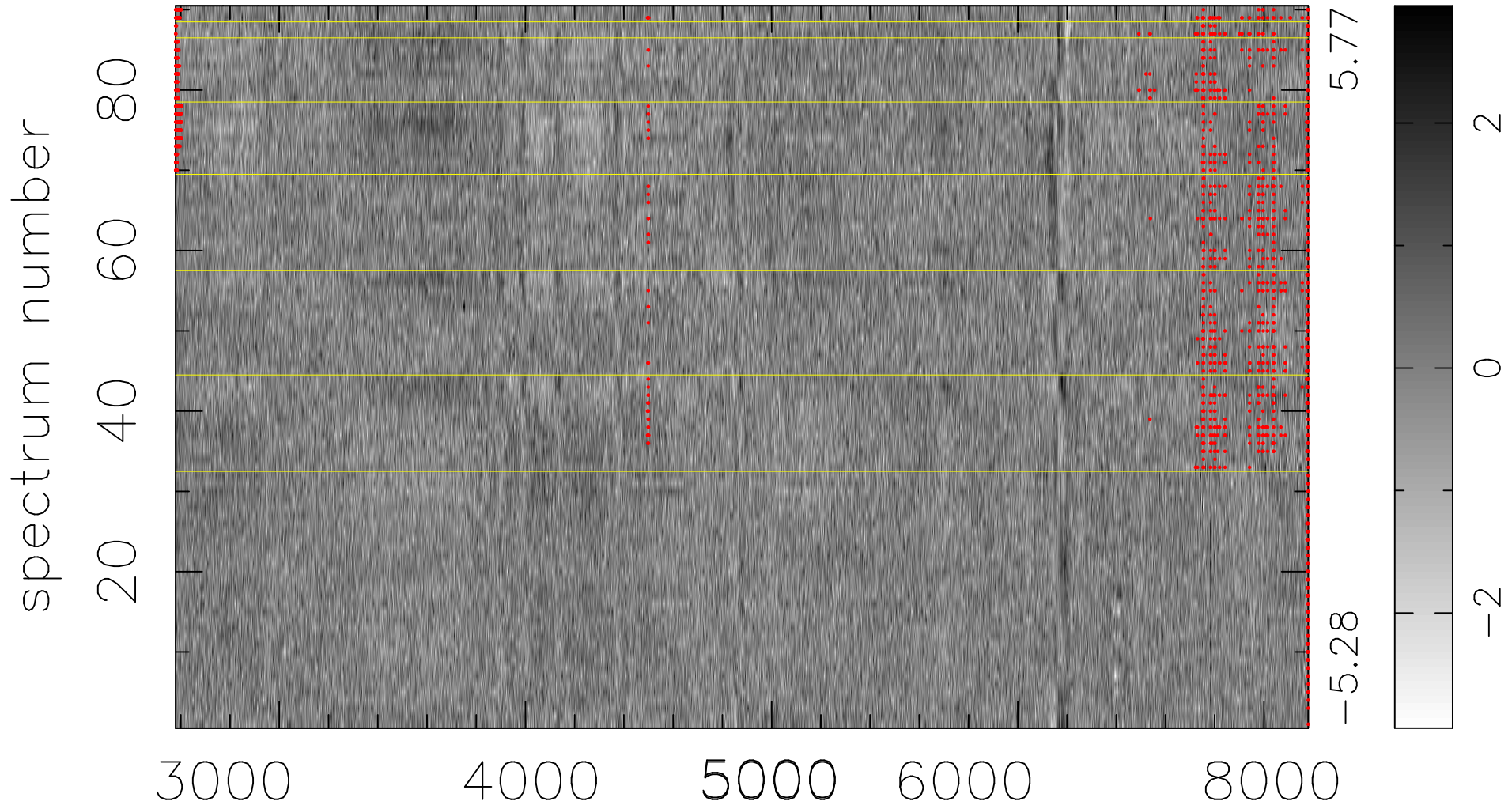


$$\chi(\lambda, t) = (\text{Data} - \text{Model } \text{AC}_5\text{B}_3\text{F}) / \sigma \chi$$

$$\chi^2 / (414180 - 5160) = 0.971 \Rightarrow 0.997$$

4602x90



bad:1444=0.35% λ (Å) $z = 0.24914$