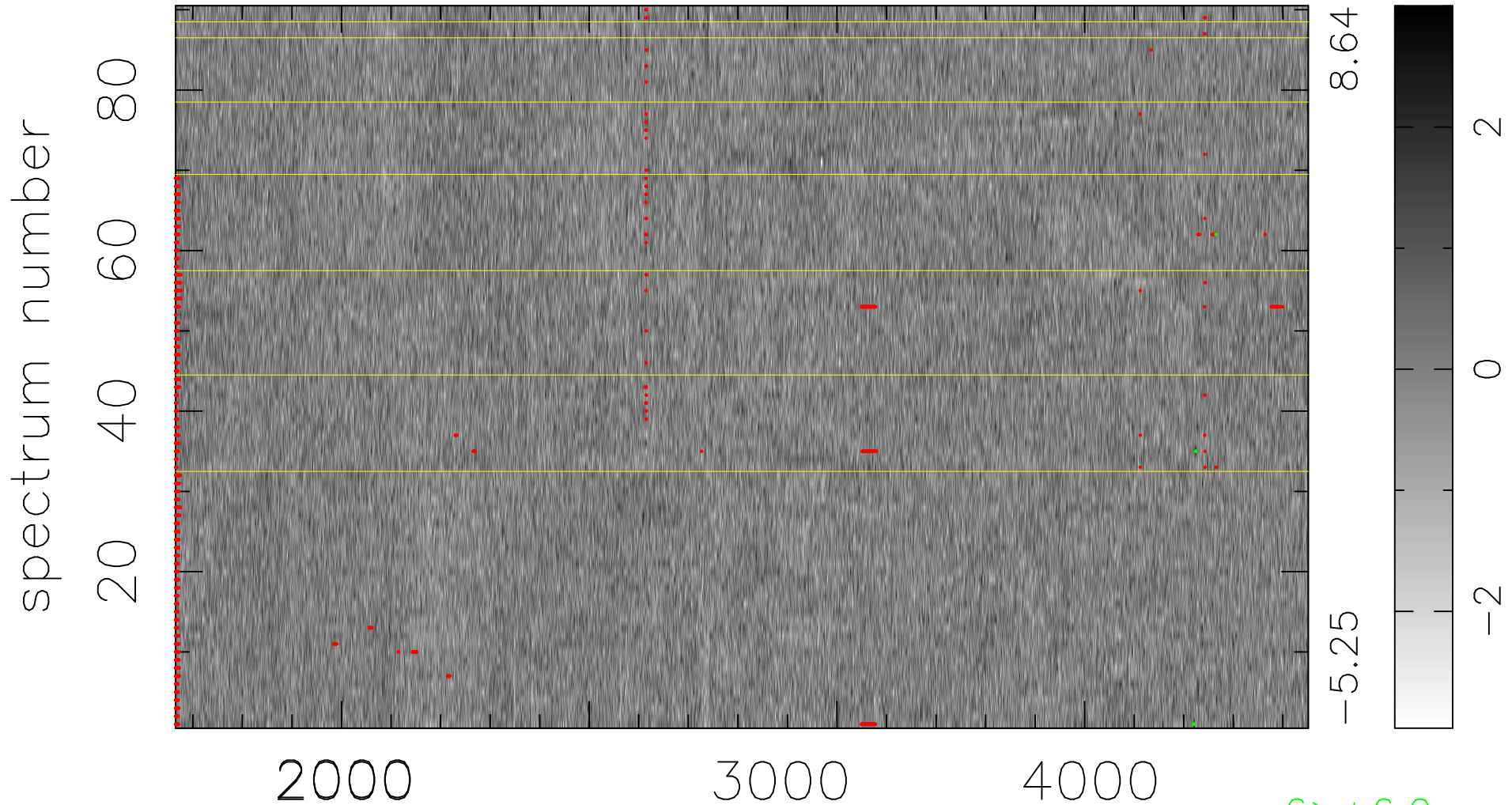


$$\chi(\lambda, t) = (\text{Data} - \text{Model } \text{AC}_5\text{B}_4\text{F}) / \sigma \chi$$

$$\chi^2 / (411570 - 5195) = 0.901 \Rightarrow 1.009$$

4573x90



bad:1216=0.30% λ (Å) $z = 1.10647$

6 > +6.0 σ