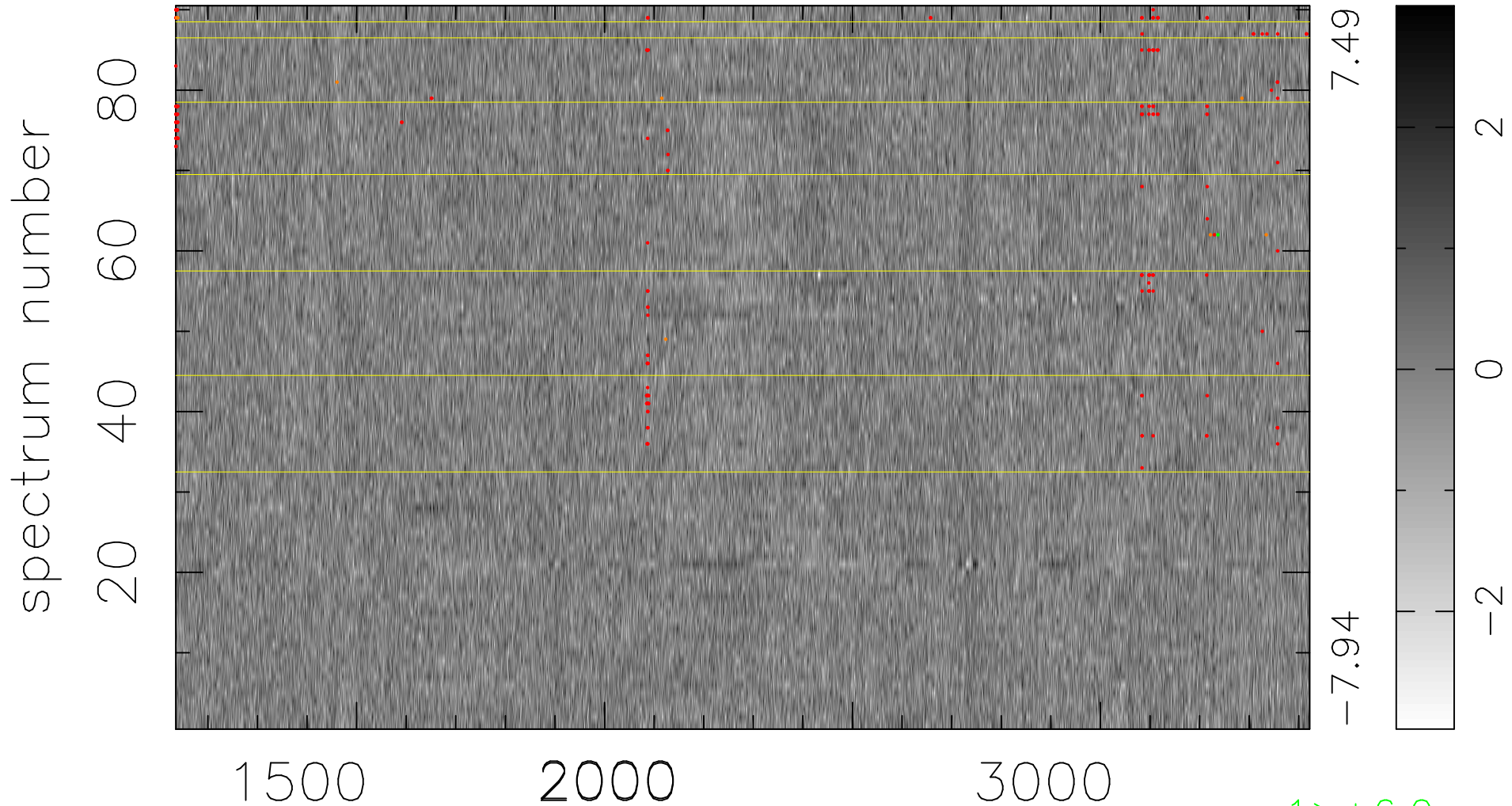


$$\chi(\lambda, t) = (\text{Data} - \text{Model } \text{AC}_5\text{B}_5\text{F}) / \sigma \chi$$

$$\chi^2 / (411660 - 5333) = 0.887 \Rightarrow 1.009$$

4574x90



bad:196=0.048% λ (Å) $z = 1.68616$

1 > +6.0 σ

8 < -6.0 σ