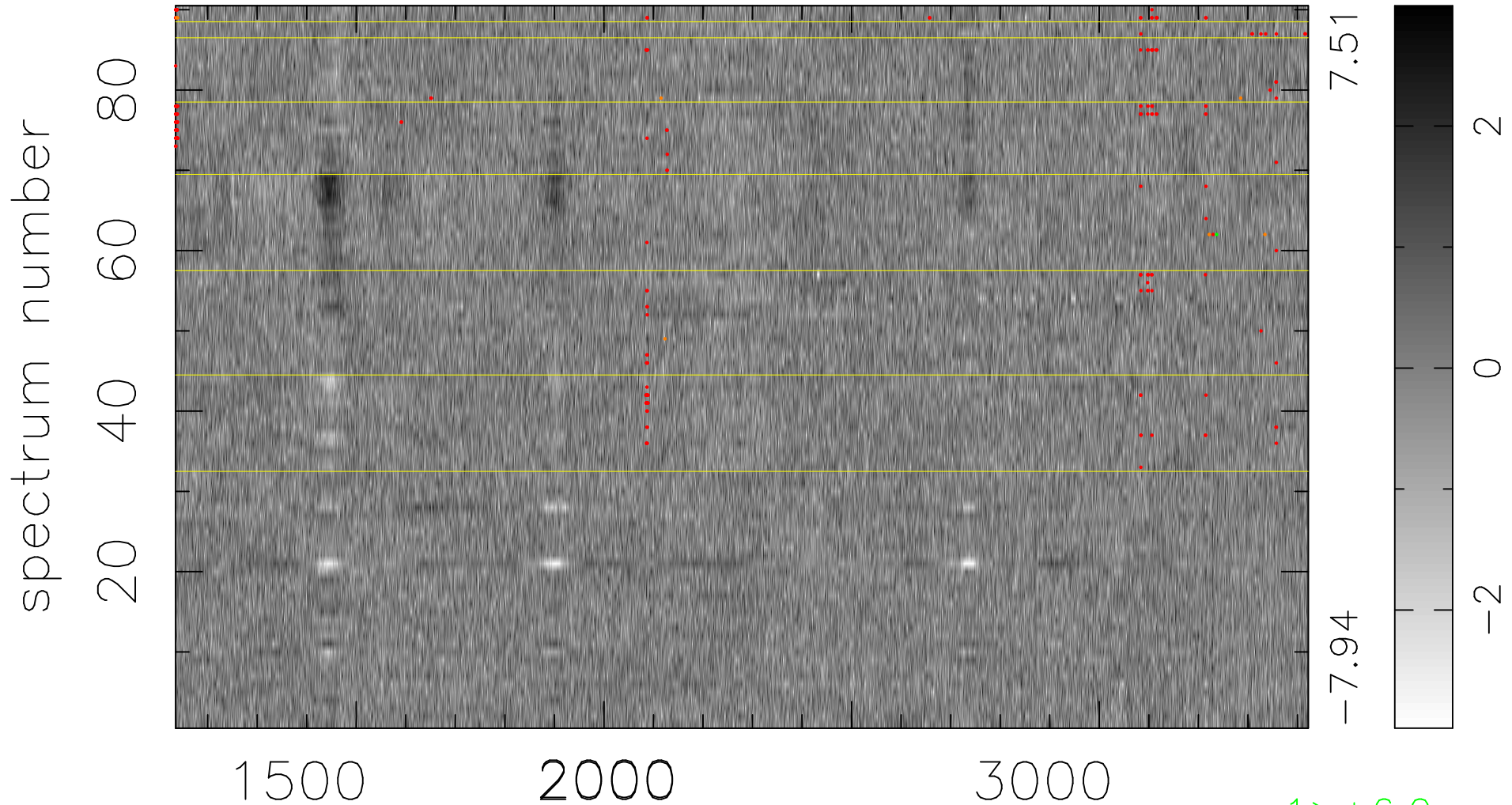


$$\chi(\lambda, t) = ( \text{Data} - \text{Model AC}_5\text{F} ) / \sigma \chi$$

$$\chi^2 / (411660 - 5149) = 0.925 \Rightarrow 1.008$$

4574x90



bad:196=0.048%  $\lambda$  (Å)  $z = 1.68616$

1 > +6.0 $\sigma$

7 < -6.0 $\sigma$