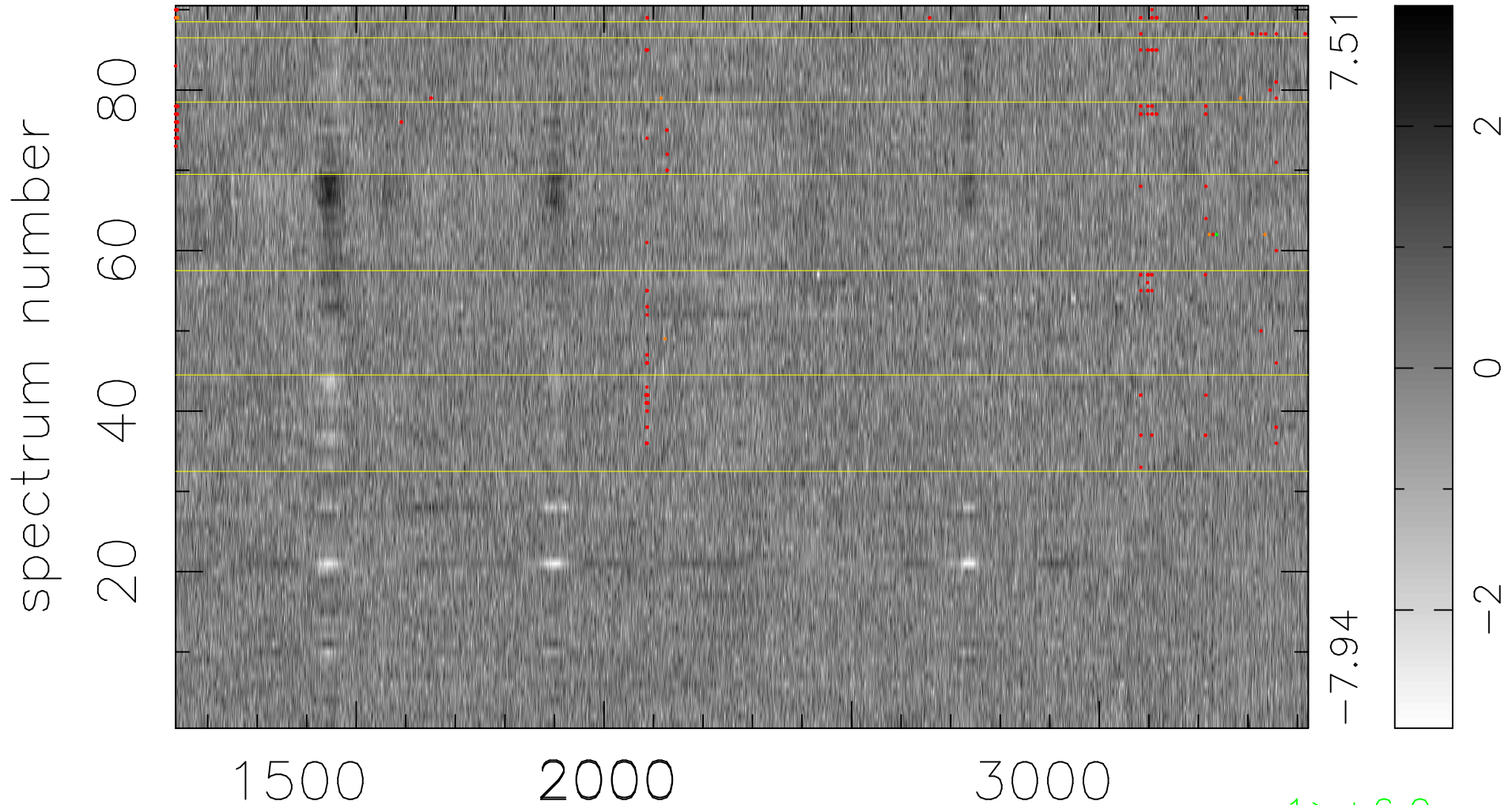


$$\chi(\lambda, t) = (\text{Data} - \text{Model } AC_5) / \sigma \chi$$

$$\chi^2 / (411660 - 5059) = 0.926 \Rightarrow 1.008$$

4574x90



bad:196=0.048% λ (Å) $z = 1.68616$

1 > +6.0 σ

7 < -6.0 σ