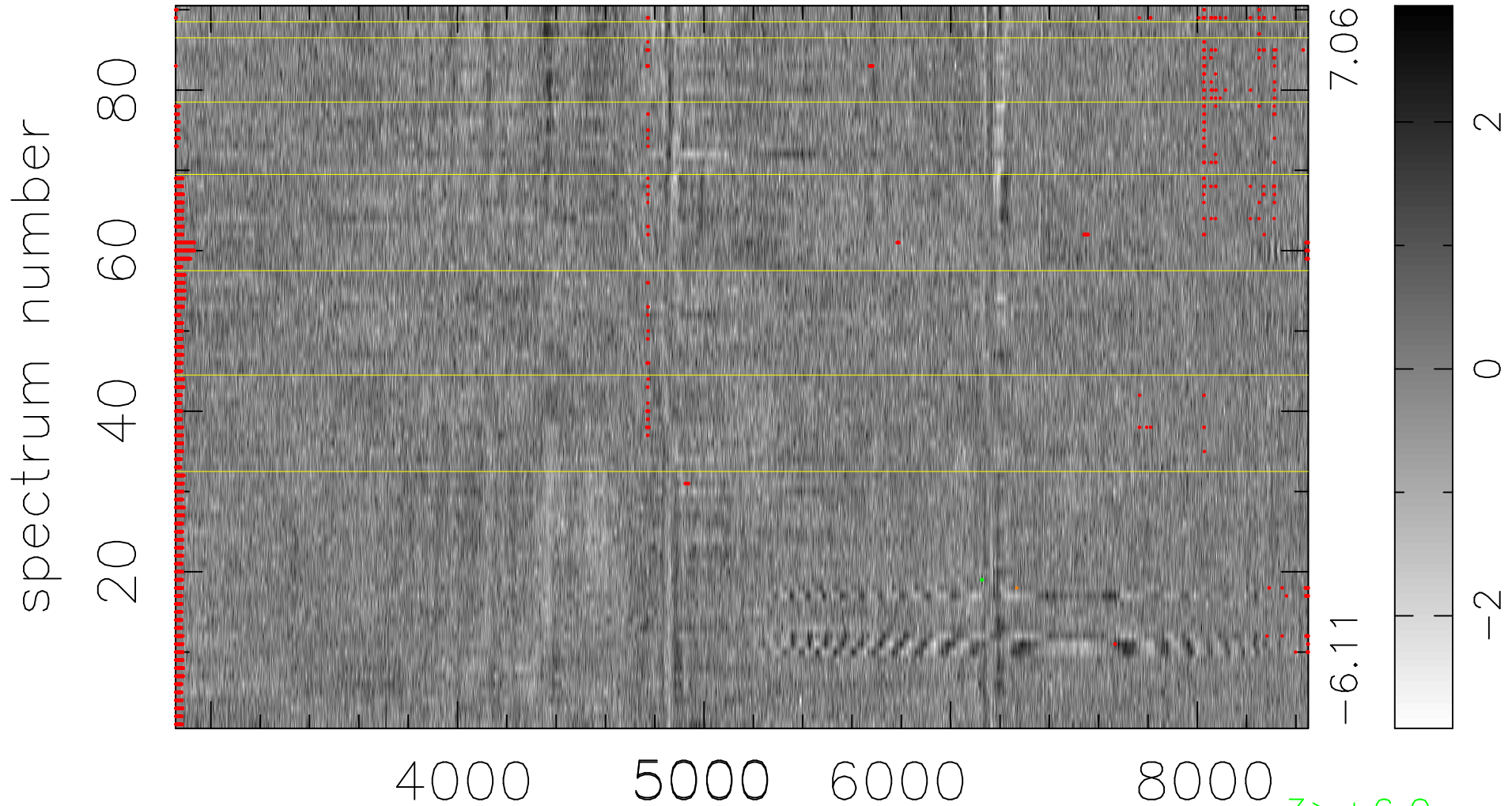


$$\chi(\lambda, t) = ( \text{Data} - \text{Model } \text{AC}_5\text{B}_4\text{F} ) / \sigma \chi$$

$$\chi^2 / (413460 - 5249) = 0.996 \Rightarrow 0.991$$

4594x90



bad:2556=0.62%  $\lambda$  (Å)  $z = 0.17301$

3 > +6.0 $\sigma$

1 < -6.0 $\sigma$